

**HHF** was founded in 2003 in Basel by the architects Tilo Herlach, Simon Hartmann and Simon Frommenwiler, whose personal, academic and professional track records are resolutely global in orientation. In its first two decades, HHF has researched and built projects in Switzerland, France, the United States, Germany, Montenegro,



**China, Mexico, Luxembourg, Inner Mongolia and Italy. At ease in extremely varied contexts, the office develops projects that are the fruit of long conversations with clients with atypical ambitions: a stop-over for pilgrims, a children's park, a collectors' storehouse, a revolutionary temple reuse in the Balkans, an observatory and insect museum on the loops of the Seine, downtown retail centres and appealing apartments and boutiques.**

**HHF architecture is a conciliatory practice of sorts, one that seeks to transform, not assault – one that manipulates what it finds to change the game and accepts the past in order to create a springboard for continuities. It prefers paradigm shifts to throwing the baby out with the bathwater, and it keeps an open mind regardless of what happens and what people want. In brief, it is not about empty gestures but instead a strong point of view.**

**Passage is the narrative thread in HHF's projects. Everything proceeds from the sequence to be lived or travelled. Each project is a tool to amplify what is there – a landscape, situation or feeling – and thereby transform whomever it touches. With their teaching work at the Harvard Graduate School of Design and Karlsruhe Institute of Technology, the HHF founders try to pass this spirit on to the next generation.**

**“HHF – Unfinished”, the title of HHF's second monograph, underscores the suspended character of any architectural venture: the design occurs in a moment outside of time, beyond the pedestrian stroll, beyond what was or will be – and hence wide open. And yet, this constructive approach is rooted in the observation of whatever is present and available. Seek a resource, of whatever sort! It hinges on this notion of economy so essential to architecture, which is read here as an imperative of relevance. Respond to a problem in the most**

**pertinent way. Proceed by borrowing, adding, subtracting or preserving, in order to make the most of whatever is at hand. Do the least possible for minimum impact and optimal effect. Reuse what still has potential. These maxims – the building blocks of HHF – are manifest in its Lichtstrasse project, winner of the Swiss Architecture Award 2015. They are evident likewise in HHF’s capacity to superimpose various scales in order to reconfigure terrains and connect the smallest to the largest element, the infrastructure to the superstructure – as seen with other awards, including the 2018 Swiss Steel Prize for the Poissy Galore on the outskirts of Paris and the 2021 AIA Design Award for the Swiss Consulate in Chicago.**

**HHF keeps developing progressive scenarios where we as architects can take responsibility by collaborating with other professions in order to build a better world. Driven by curiosity, exploration and research, HHF emphasises the use of the latest digital precision tools and innovative ideas in order create projects that are sustainable, resilient and flexible – often with functional spatial contrasts that excitingly complement each other. By amalgamating what has been with what is, by managing the legacy of a place while adding the power of innovation, we seek to create unique spaces, contextually integrating what we believe the future should hold.**

## For the city

- p8 STADePARK in Luxembourg<sup>LUX</sup>**
- p12 Im Oristal, Tiny homes for minimal carbon footprint<sup>CH</sup>**
- p26 Parking & More, superstructure in Basel<sup>CH</sup>**
- p30 La Défense 2020, master plan for public spaces<sup>FR</sup>**
- p32 PAV Genève, Re-territorializing the PAV in Geneva<sup>CH</sup>**

## Places

- p34 Swiss consulate in Chicago<sup>USA</sup>**
- p40 Réinventer Paris, La Marseillaise<sup>FR</sup>**
- p46 Labels 2, innovation and fashion center in Berlin<sup>DE</sup>**
- p54 Mall of Ku'Damm in Berlin<sup>DE</sup>**
- p58 Dom Revolucije, cultural center at Nikšić<sup>Montenegro</sup>**
- p62 Kirschgarten Mensa, school extension in Basel<sup>CH</sup>**
- p66 Confiserie Bachmann, tea house in Bâle<sup>CH</sup>**

## Experiences

- p72 Folies and museum in Carrières-sous-Poissy<sup>FR</sup>**
- p80 Baby Dragon, pavilion in Jinhua<sup>China</sup>**
- p84 Ruta del Peregrino, observatory in Jalisco<sup>MX</sup>**
- p90 Temporary structures<sup>Rio, São Paulo, Basel, Karlsruhe, Copenhagen</sup>**
- p96 Artfarm, Art gallery and storage in New York<sup>USA</sup>**

## Collective

- p104**    **Aux entrepôts, flexible housing** <sup>CH</sup>
- p112**    **Starlette, mixed-use quarter on the Rhein** <sup>FR</sup>
- p122**    **Jardin Métropole, an expressive tower in Biel** <sup>CH</sup>
- p126**    **Landskronhof, densification brings nature  
closer to home** <sup>CH</sup>
- p130**    **Weggishof, wood-based BIM project** <sup>CH</sup>
- p138**    **Orée in Crissier, townhouse/remarkable house** <sup>CH</sup>
- p142**    **Lichtstrasse, housing and restaurant in Basel** <sup>CH</sup>
- p150**    **Byfangweg, apartment building in Basel** <sup>CH</sup>
- p154**    **CDMDW, paired houses in Montreux** <sup>CH</sup>
- p158**    **Sonvida, private housing and parking in Basel** <sup>CH</sup>

## Individual

- p166**    **Tsai Residence, house in Upstate New York** <sup>USA</sup>
- p170**    **Guesthouse in Upstate New York** <sup>USA</sup>
- p176**    **House D in Nuglar** <sup>CH</sup>



For the  
city

# **STADePARK**

**City district, living neighbourhood in Luxembourg<sup>LUX</sup>**

**STADePARK is the winning proposal of an open competition the city of Luxembourg held for a major development transforming the city's stadium and surroundings into a park and living urban neighbourhood development spanning more than 10 hectares. Developed in collaboration with 2001, Agence TER, Systematica, Transsolar and Cabane, STADePARK is truly a public project, as 83 percent of the land belongs to the city. Thus, it is a unique opportunity for all stakeholders to create a new urban garden destination that benefits public as well as private interests – a public green space mixed with new residential developments and repurposing of existing properties. The stadium provides a clear and specific spatiality, which also extends the European history of key public spaces: respect for the role the stadium had being the essential starting point of a clear and strong urban figure. Considering the characteristics of the site, homogeneous and uniform development had to be excluded. Specific urban conditions and situations will be achievable by architectural typologies inherent and common to the local construction culture. Thus the project will guarantee spatial qualities on different scales – flexible in programming while integrating public**



Program  
Client  
Area  
Year  
Team

Urban neighbourhood development  
Luxembourg City  
10 HA  
International competition, 1st prize, 2022–ongoing  
Urban planners: HHF Architects and 2001 / Landscape architect: TER, Paris (FR) /  
Mobility: SYSTEMATICA, Milan (IT) / Energy expert: TRANSOLAR, Munich (DE) /  
Urban programming: Cabane - Urbane Strategien, Basel (CH) / Illustration: Jisu Choi

**infrastructure, soft mobility, citizen participation and social diversity. Cultural and commercial features with a metropolitan impact will be placed**



**along the infrastructural artery of Route d'Arlon – a boulevard where the tram will drive through the new green park.**



10

Master plan



Conceptual graphic

For the city



Park façade



Urban façade

## **IM ORISTAL**

### **Tiny homes for minimal carbon footprint <sup>CH</sup>**

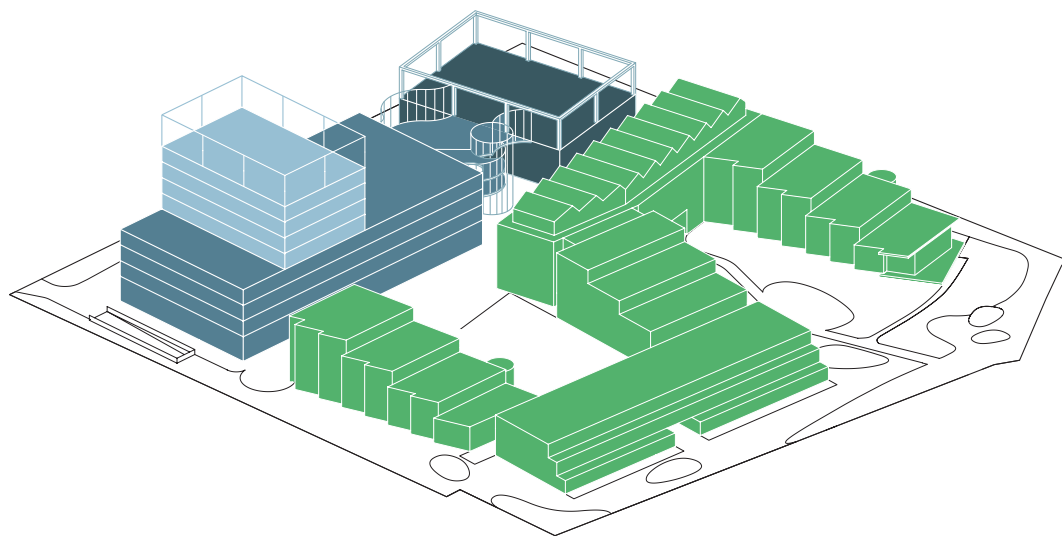
**A centrally located neglected former industrial parcel of 4957 m<sup>2</sup> in Liestal is being transformed into a vivid, mixed-use quarter with an international school, a gymnasium, 120 workspaces and 101 tiny homes, apartments and town houses – all with a strong architectural identity and a strong ecological concept. The two semi-public buildings create a protecting buffer for two calm courtyards surrounded by residences of diverse typologies divided into three subgroups: 86 tiny homes, 10 family apartments and 5 town houses alongside several communal spaces. Designed with care for those wanting a smaller ecological footprint, the tiny homes occupy a space between 36 and 42 m<sup>2</sup>. If, however, the need arises, these can also be combined to create larger living units. The apartments measure a generous 120 m<sup>2</sup> and are meant for families, whereas the five 125 m<sup>2</sup> town houses fulfil the dream of owning your own house. Ground-floor apartments come with double ceiling heights and a recessed mezzanine. The graduated building perimeters allow most residences to have private terraces, natural light and views towards the green spaces along the waterway of the Orisbach.**

Program  
Client  
Location  
Area  
Cost  
Year  
Team

Housing, education, work spaces  
sitEX Properties Holding AG  
Liestal  
23'820 m<sup>2</sup>  
82,4 M CHF  
2019-ongoing  
HHF / Gohl Landschaftsarchitektur/ Schnetzer Puskas Ingenieure AG  
Rudolf Keller & Partner Verkehrsingenieure AG/ Stierli Ruggli Ingenieure Raumplaner



13



Office School Sports Housing

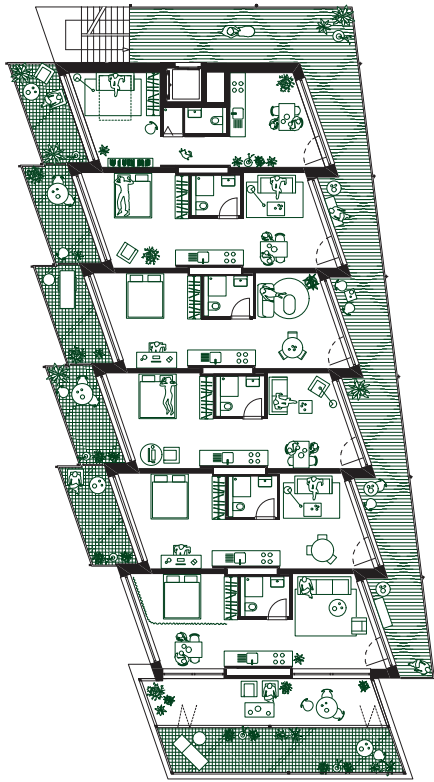


14

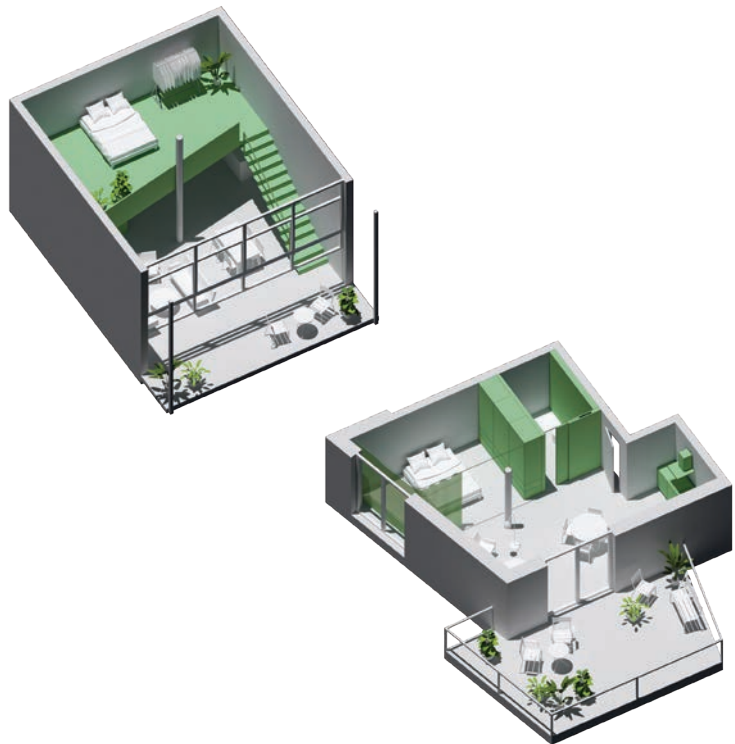
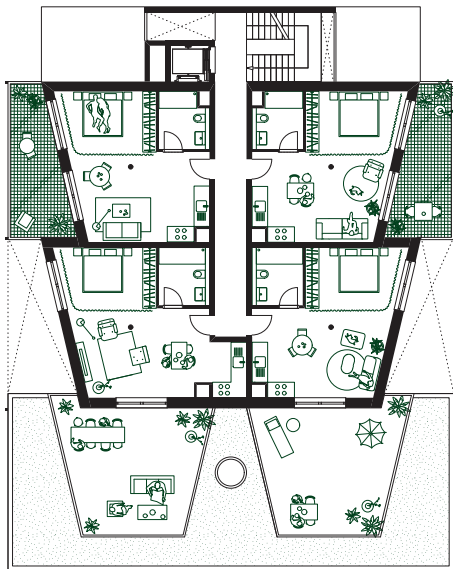


For the city



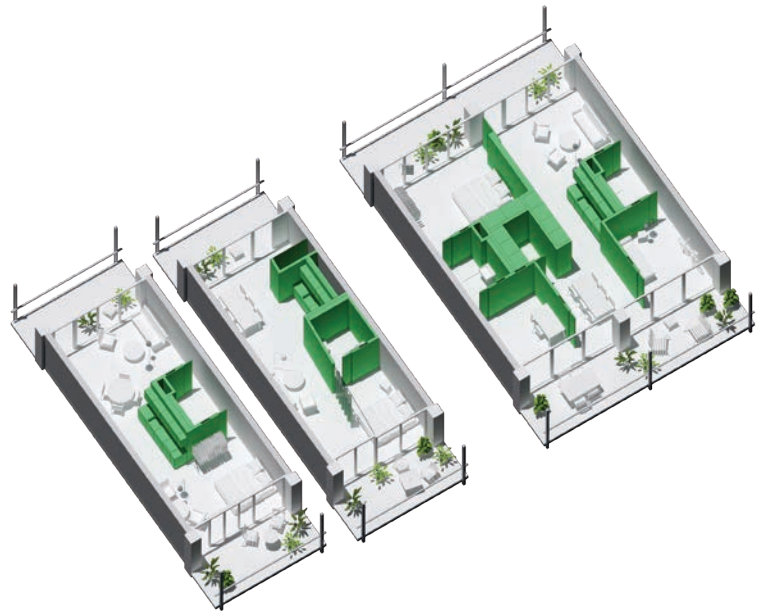
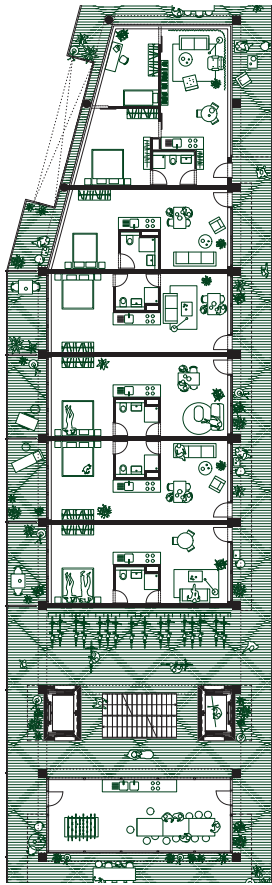


Top: duplex type:  
 $40.9 \text{ m}^2 + 14.2 \text{ m}^2$  mezzanine + terrace:  $9.3 \text{ m}^2$   
 Bottom: penthouse type:  
 $41.1 \text{ m}^2 +$  terrace:  $21.8 \text{ m}^2$

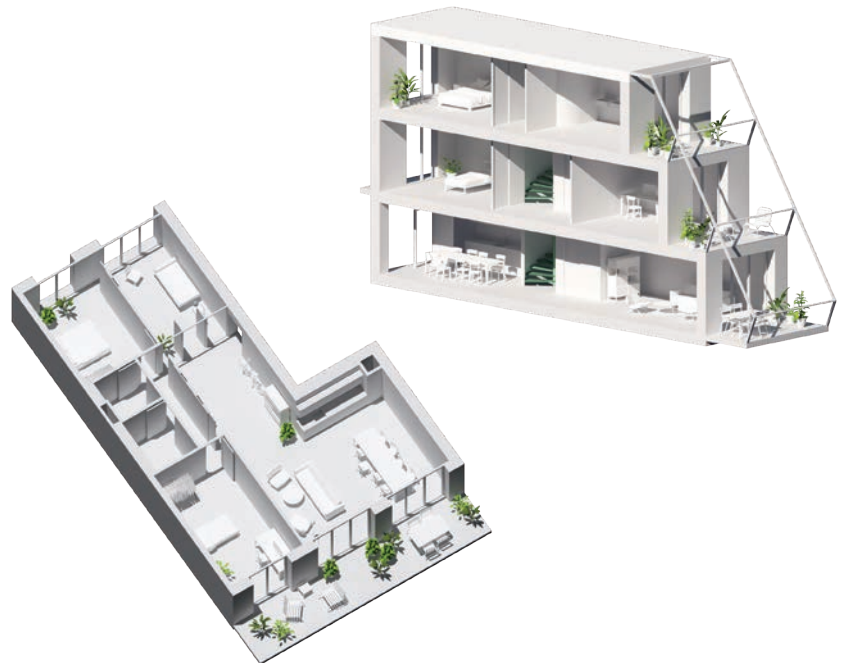
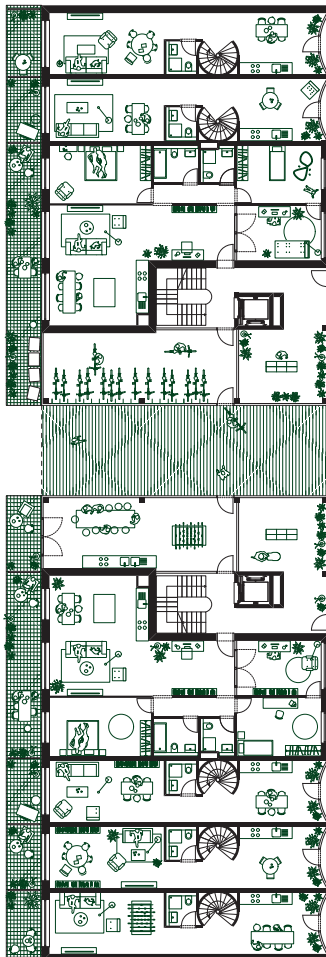


Top: duplex type:  
 $44.9 \text{ m}^2 + 22.8 \text{ m}^2 +$  terrace:  $10.8 \text{ m}^2$   
 Bottom: angle type:  
 $43.5 \text{ m}^2 +$  terrace:  $17.7 \text{ m}^2$





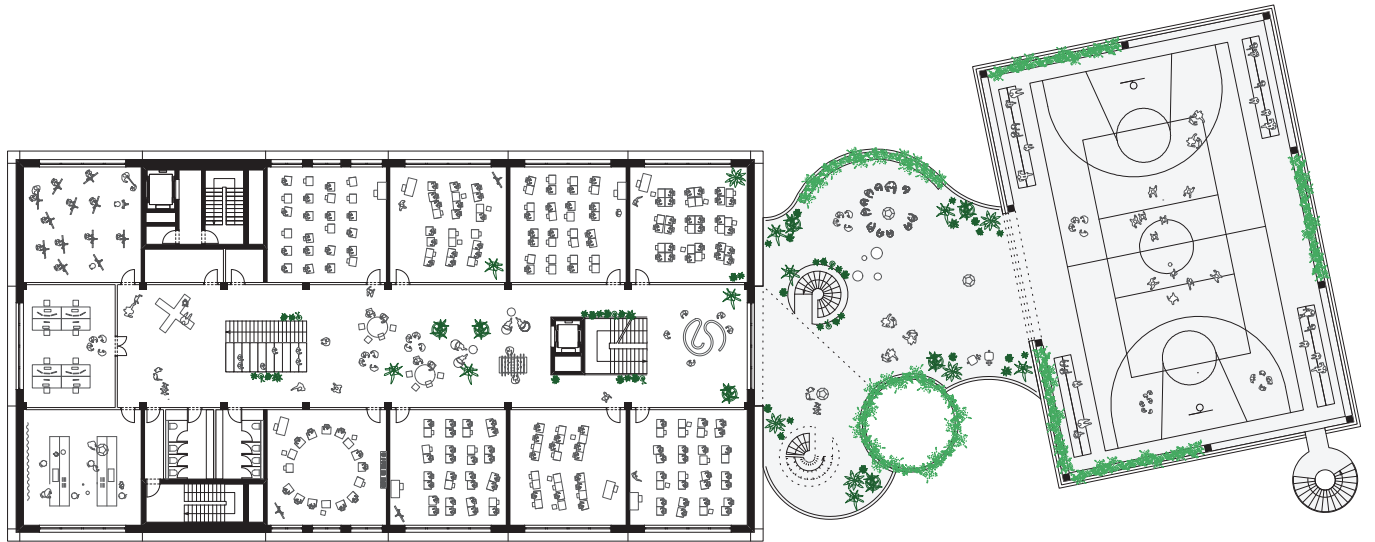
Left: residential type 1:  
 42.3 m<sup>2</sup> + terrace: 10.6 m<sup>2</sup>  
 Middle: living room type 2:  
 43.5 m<sup>2</sup> + terrace: 10.6 m<sup>2</sup>  
 Right: Combined residential type  
 (two apartments merged): 86.4 m<sup>2</sup> +  
 terrace: 21.3 m<sup>2</sup>



Left: family apartments:  
 116.1 m<sup>2</sup> + terrace: 8 m<sup>2</sup>  
 Right: townhouses:  
 125 m<sup>2</sup> + terrace: 10.6 m<sup>2</sup>

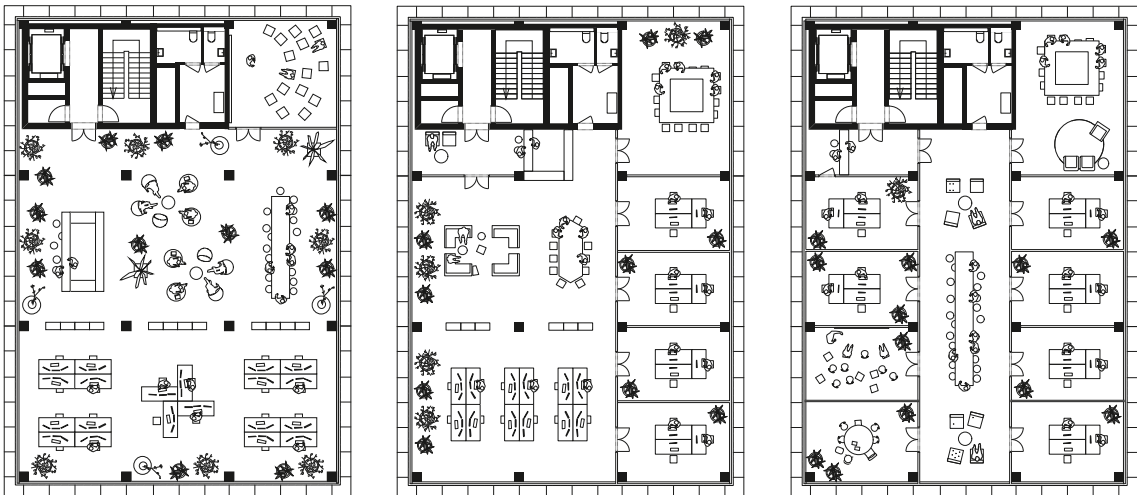


18



School and gymnasium

For the city



Flexible offices

## **PARKING & MORE**

### **Superstructure parking in Basel <sup>CH</sup>**

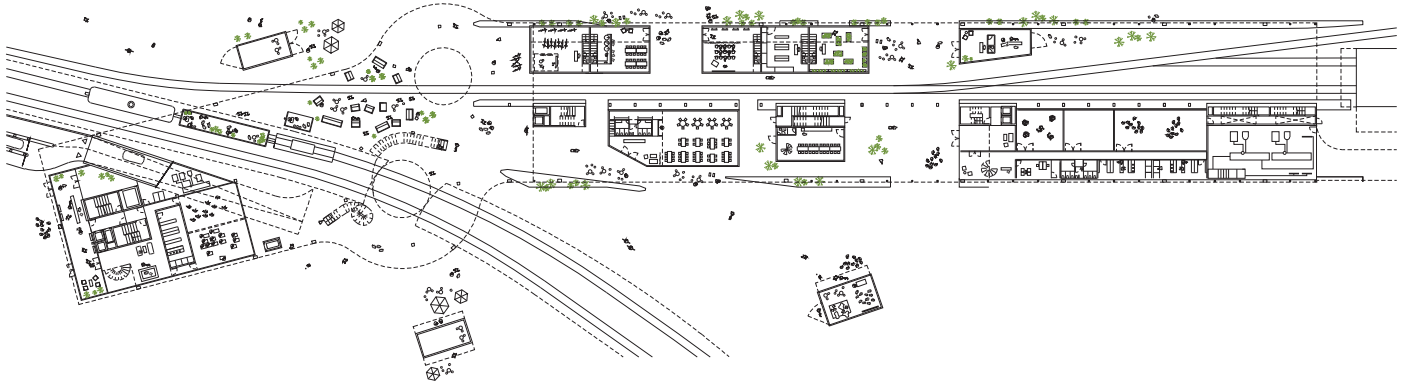
**The project called “Parking & More“ is a public facility and mixed use structure for parking and a variety of public and private programs. The new concrete structure will be placed over the existing standard steel parking lot. The current building will be renovated and fully integrated into a new and much larger parking lot. The goal is to create intense and multilayered infrastructure, which works as an urban hinge, connecting and regulating different types of mobility flows, both from north to south and east to west. The fully open structure has ceiling heights which are slightly above standard heights for parking to accommodate other permanent and temporary built-in programs. A series of small scale shops, bars and restaurants are located on the ground floor, creating a vibrant street and a partially covered urban plaza with different sport facilities and temporary pop-up stores. Besides parking there is a motel and a sports club integrated on the upper floors. The roof top is used for urban farming and provides a public garden with a restaurant, bars and an event hall overlooking the city. All internal circulation is organized with two centrally located spiral ramps leading up to the roof. They allow for direct access with cars and**

Program mixed-use, parking  
Client Christoph Merian Foundation Location Basel, Switzerland  
Area 41'000 m<sup>2</sup>  
Cost 40 M CHF  
Year invited competition 2014, 1st Prize

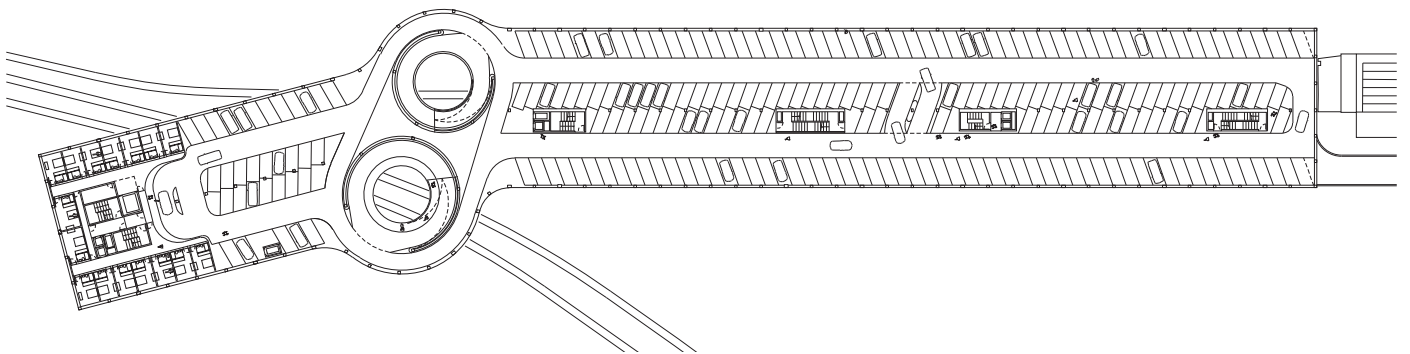
**bikes to all floors including the roof. An additional  
sideway for pedestrians, located on the inside of a  
ramp leads to the public viewing platform, offering**



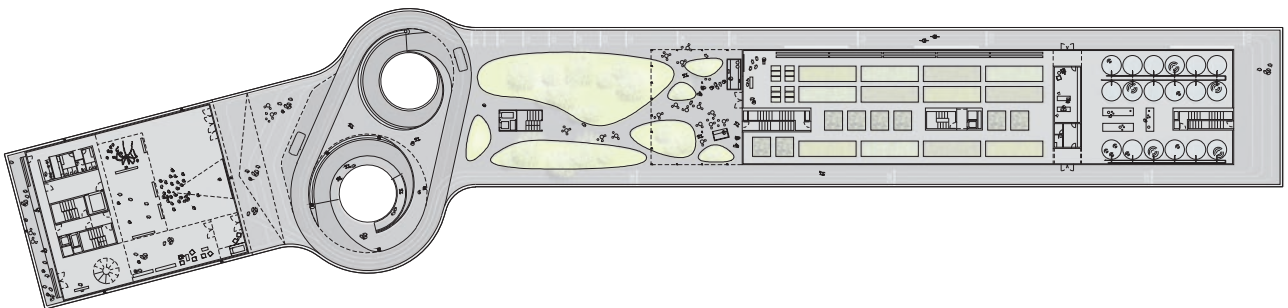
**a great view over the fast developing area of the  
Dreispietz quarter.**



Ground floor



Parking levels

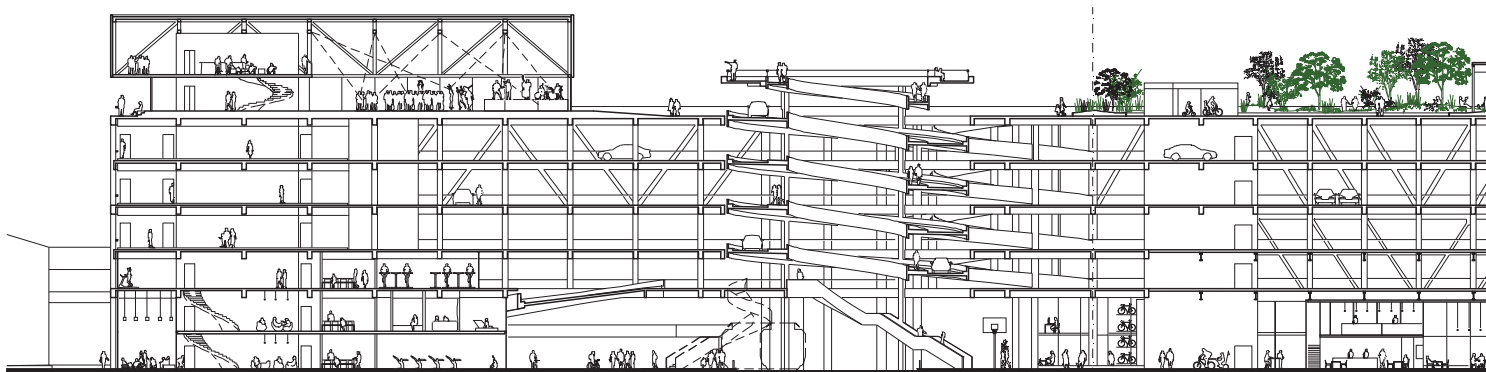


Roof top



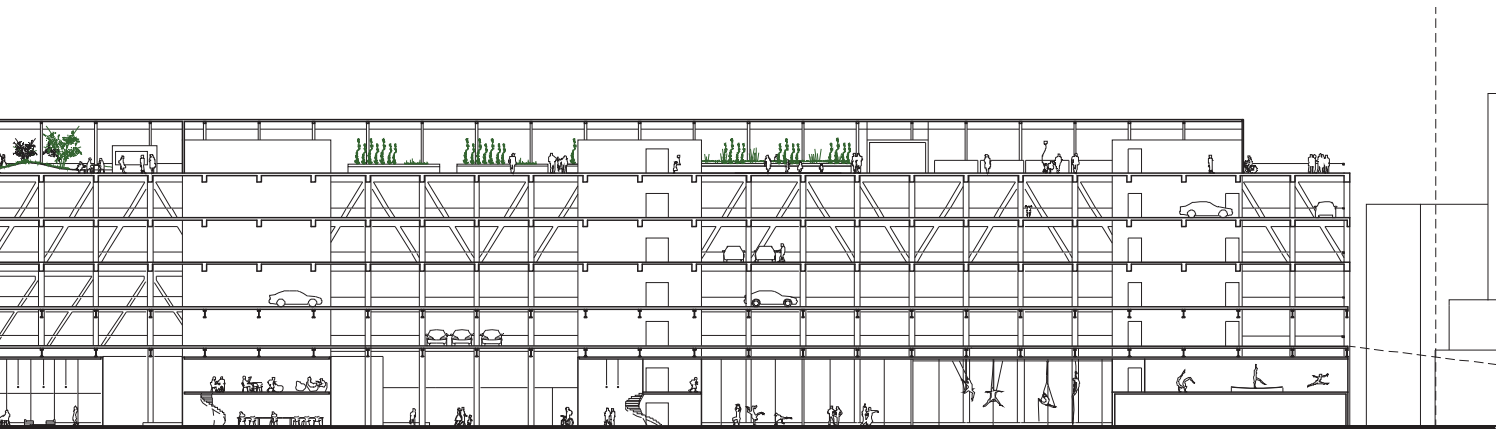


24



For the city





Longitudinal section

# LA DÉFENSE 2020

## Master plan for public spaces at La Défense <sup>FR</sup>

**In 2012, the city administration office Defacto appointed AWP and HHF to design and realize an urban orientation scheme for La Défense. The brief for a new master plan for the entire 61-hectare site required that attention be given the matters of green space, infrastructure, circulation, and transport, and most particularly, the 30-hectare esplanade. The award-winning project addressed the spatial and programmatic complexity of the site, which derives from its circulation flows and infrastructures on multiple levels. The esplanade itself is hybrid ground, simultaneously serving pedestrian traffic, sheltering underground structures, and demarcating perimeters from the surrounding streets, while also floating above the transport hub. HHF and AWP opted to highlight these various roles by treating the esplanade as a key interface: it no longer simply separates distinct spaces, but optimizes their usage. This holistic vision is likely to foster new cultural uses of the site and enhance the interplay of the landscape, architecture, and infrastructure. This urban plan linking downtown Paris and the La Défense business district reinforces local relations on the site and integrates the underground transport systems. Its**

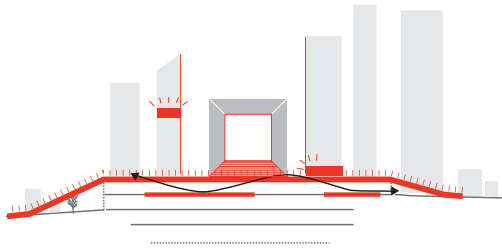
Program Master plan of public spaces for La Défense  
Client Defacto, public institution for La Défense  
Location La Défense, France  
Area 160 ha  
Year 2014 studies  
Team HHF with AWP

**major provisions lay a framework within which one could feasibly build new towers, remodel existing commercial spaces, open up more space for cultural**



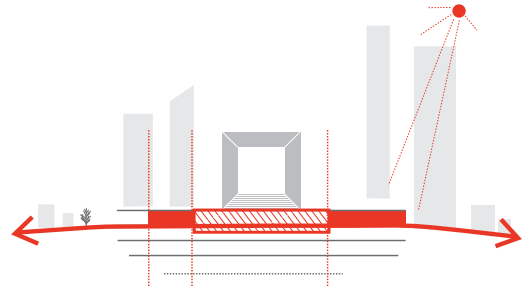
**events, create a network of open green spaces, and expand the transport infrastructure, thus assuring the site a substantial degree of flexible, modular planning for the next twenty years.**

## RE-GRAND AXE

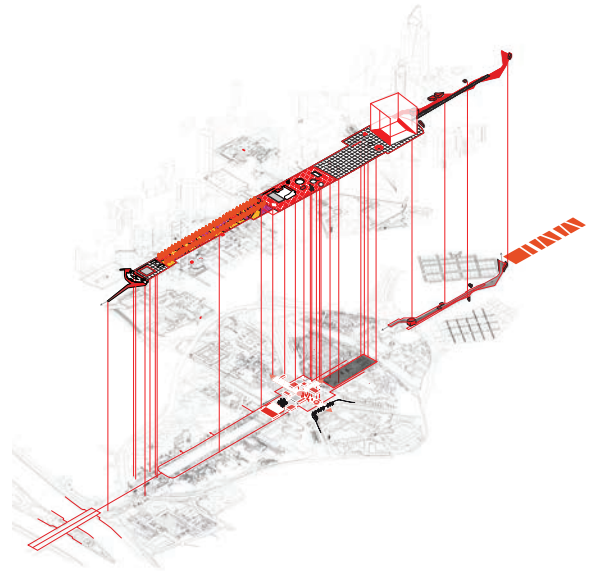
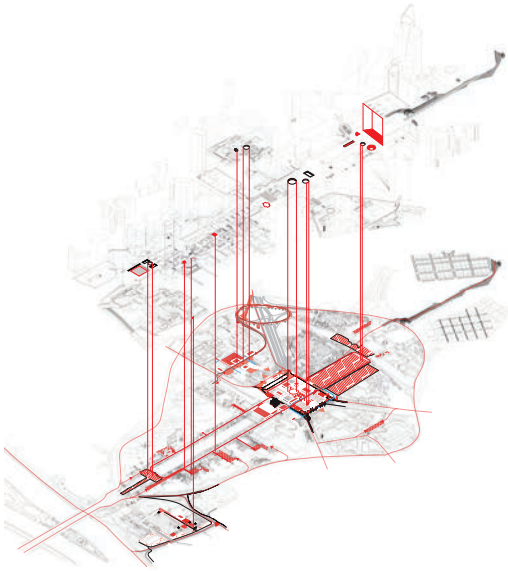


**REDONNER UNE VISIBILITÉ À L'AXE**

## COEUR TENDRE



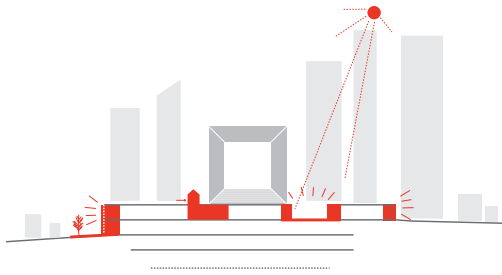
**CRÉER DES SEUILS URBAINS**



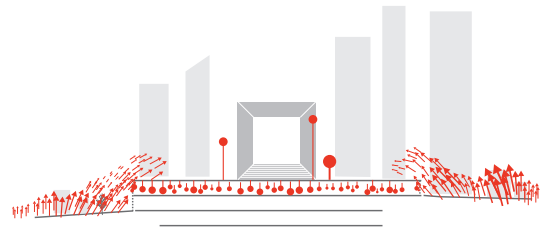
28



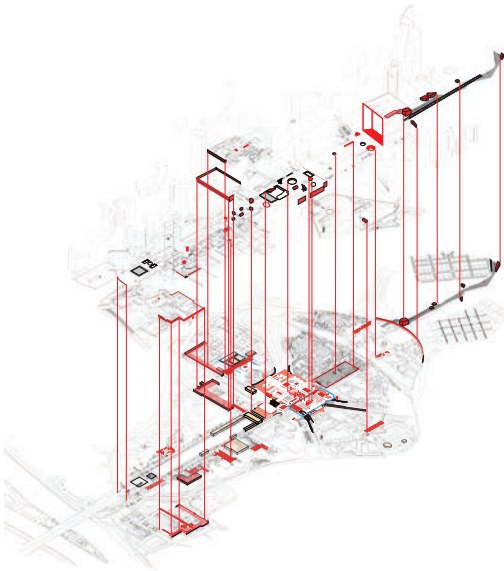
# RÉHABILITER LE DOMAINE



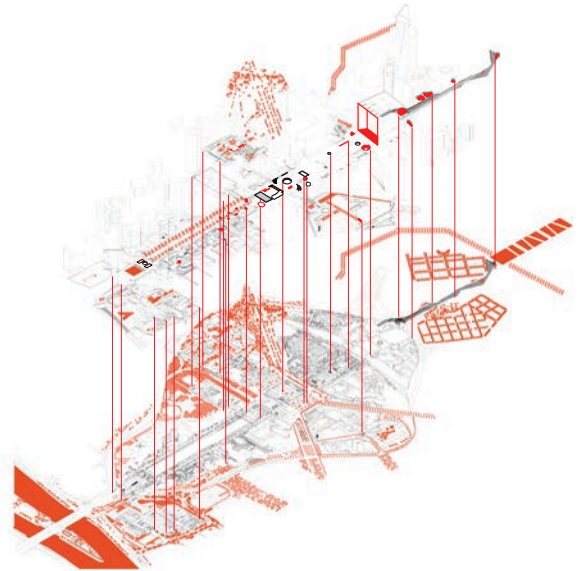
# NATURE INVASION



# OPPORTUNITÉS FONCIERES



# UN CLIMAT



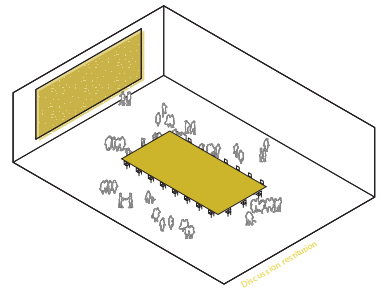
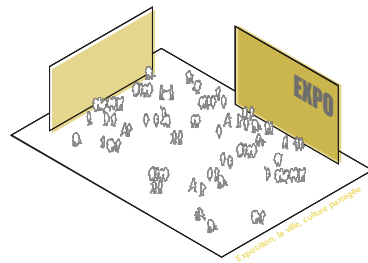
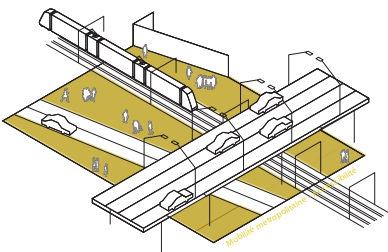
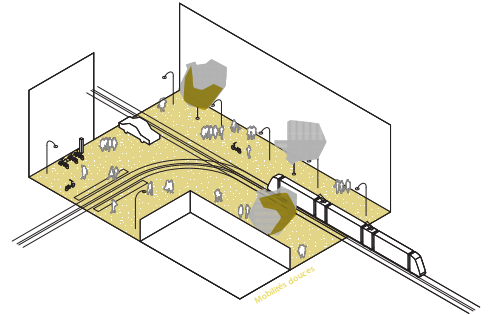
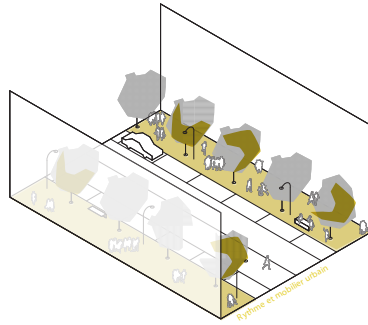
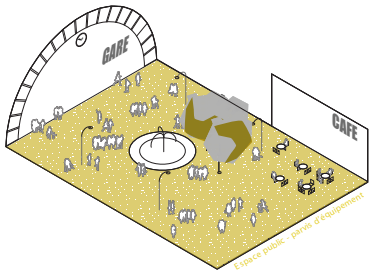
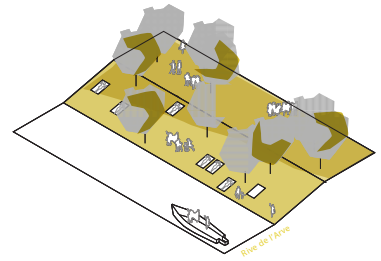
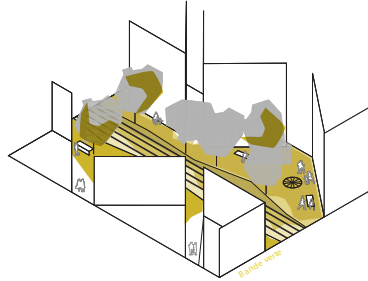
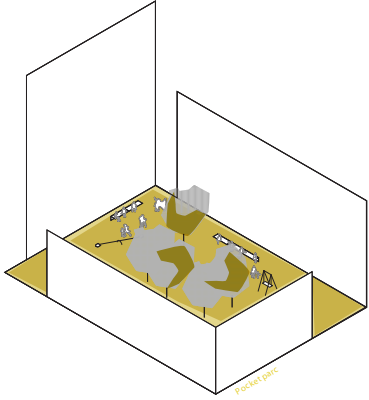
# PAV GENÈVE

## Re-territorializing the PAV in Geneva<sup>CH</sup>

**The PAV is one of Geneva's most important urban projects and is projected to become a dense, central, and mixed-use district by 2050. On the basis of an existing Master Plan by ENF Architects from Zurich, our team developed a comprehensive vision and established guidelines for all future public spaces and a new mobility concept for the PAV area. The strategy can be summarized in three parts: re-territorializing the PAV by finding a balance between the current chaos and new structuring elements; exploiting the transformation by producing interventions on the site that stimulate urban activities; and generate a new identity through the reinforcement of the existing identity (this by, among other things, establishing a large, emblematic public space). One important idea of our intervention is to progressively mutate the district by re-appropriating existing open spaces – used today as parking lots, open storages, streets or railway tracks. Keeping unbuilt areas completely open for any type of public usage becomes a means of guiding the development of future built areas. The result doesn't consist of a rigid plan but of structuring elements framing the area and enabling a clearer reading of the site.**

Program  
Client  
Area  
Cost  
Year  
Team

Master plan for public spaces and mobility  
Canton de Genève (DPAV, DGAT, DCTI) Location Praille-Acacias-Vernets, Geneva, Switzerland  
230 ha  
6,34 M CHF  
1st Prize 2009 / study 2009 - 2012.  
HHF with AWP







# Places

# SWISS CONSULATE IN CHICAGO

Collaboration through time and space <sup>USA</sup>

**The new Swiss Consulate Chicago occupies a west-facing 140 m<sup>2</sup> suite on the 38th floor of the iconic 100-storey 875 North Michigan Avenue - formerly the John Hancock Center. It has been designed in collaboration with Kwong Von Glinow in the spirit of Swiss architect Otto Kolb (1921-1996), who lived, worked and taught in Chicago from 1947 to 1960. To us Kolb's fresh take on modernism, which includes a blurring of formal hospitality and privacy, goes beyond Swissness and symbolises architecture for exchange. Our design approach questioned the rigidity of consular requirements by adding organic forms and layering spaces through sections and transparencies. This provided a contemporary working environment that respects needs while also inviting for spontaneous collaborative working situations. With a floor-to-ceiling height of 4.4 metres and nearly uninterrupted sight lines, the suite was developed as one fluid space. The green core mediates the individual working areas of each of the consular staff and the areas where they come together as a team. The light-filtering architectural elements act as mediators between the public area and the back-office areas of the consulate, a quality further emphasised with plants that poke through the screen, blurring the boundary of the core.**

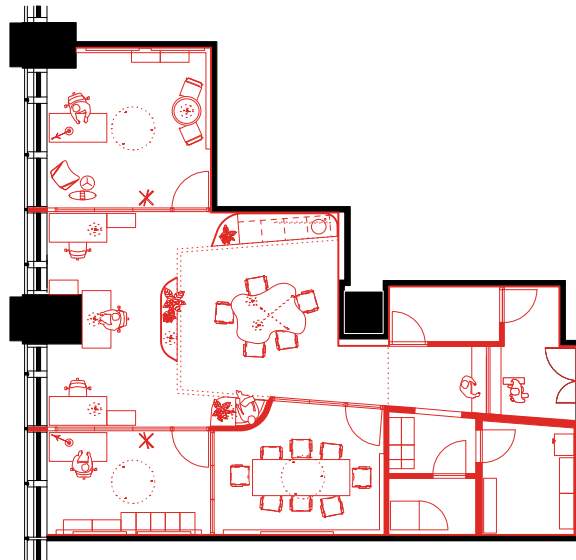
Program Office space with security requirements  
Client Bundesamt für Bauten und Logistik  
Location Chicago, USA  
Area 140 m<sup>2</sup>  
Cost 1.135 M \$  
Year 2019-2021  
Team HHF and Kwong von Glinow











Plan

# LA MARSEILLAISE

## Réinventer Paris 2 <sup>FR</sup>

**A place of intensity and meeting point dedicated to music, this project developed by HHF in association with Bruther for the developer Nexity attempts to reinvent the Porte de Pantin, near the Paris ring road. This formidable machine of nearly 40,000 m<sup>2</sup> embraces issues of diversity and an extraordinary chronotopia: it is a place where you can have fun, compose, learn, produce music. The capacities of its architecture, its flexibility and its ingenuity allow this tool-building to nest various programs dedicated to the learning, practice and promotion of music in a unique ecosystem. Evoking the silhouette of an ocean liner, its simple form is distinguished by a rounded bow to the north that addresses the square, while stepped terraces and a slit to the south reduce its monumentality. On the edge of the plot, a garden is set up in the form of a landscaped moat. Its rounded morphology reconnects with the curved shapes of the ring road. The facade cladding made of glass and steel diffracts the surrounding space and the moving lights of the ring road, reflecting a 360° view of its territory.**



Program Mixed project around music and performance  
Client Nexity, Engie  
Location Paris, Réinventer Paris Marseillaise site  
Area 38 255 m<sup>2</sup>  
Year 2019 competition, finalist  
Team HHF with Bruther

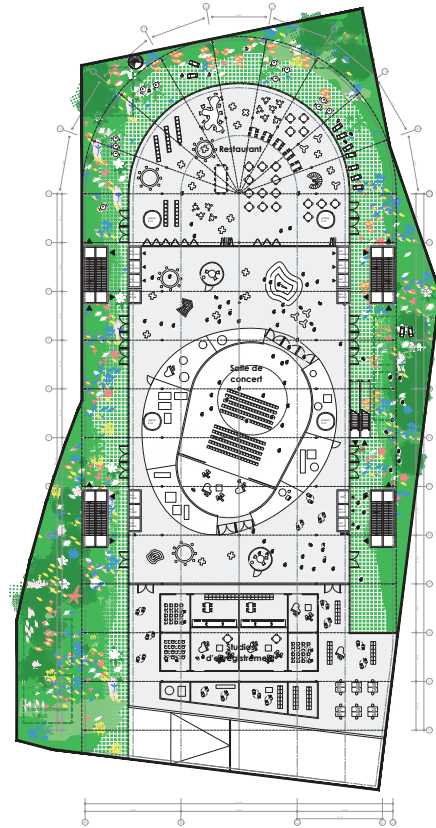




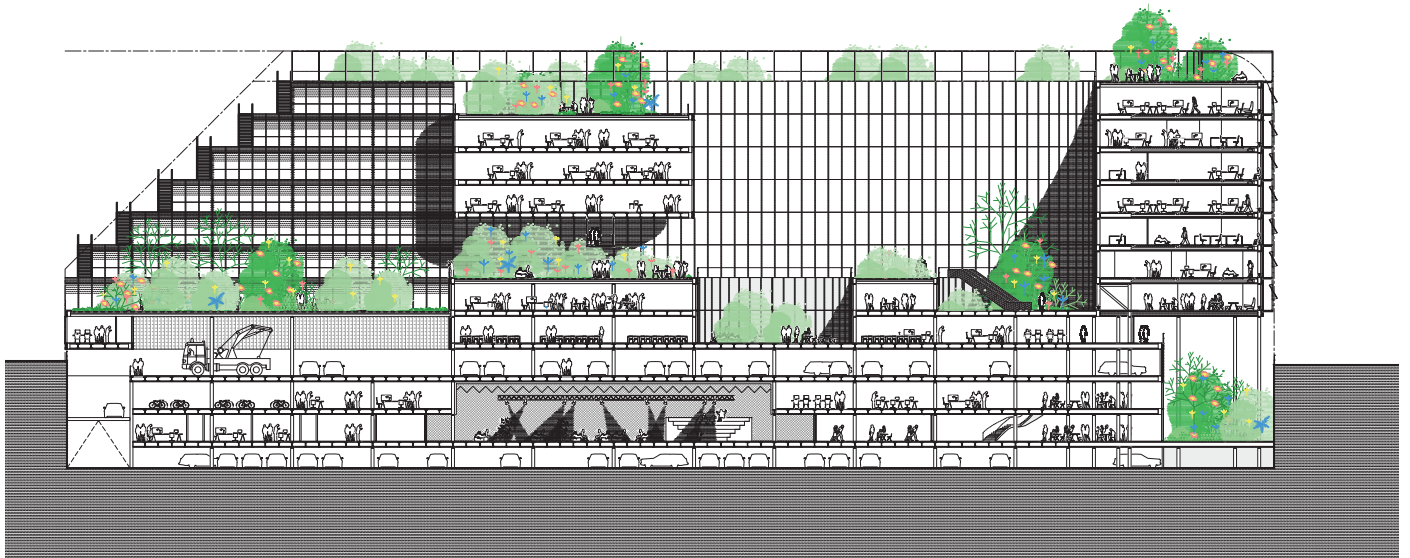




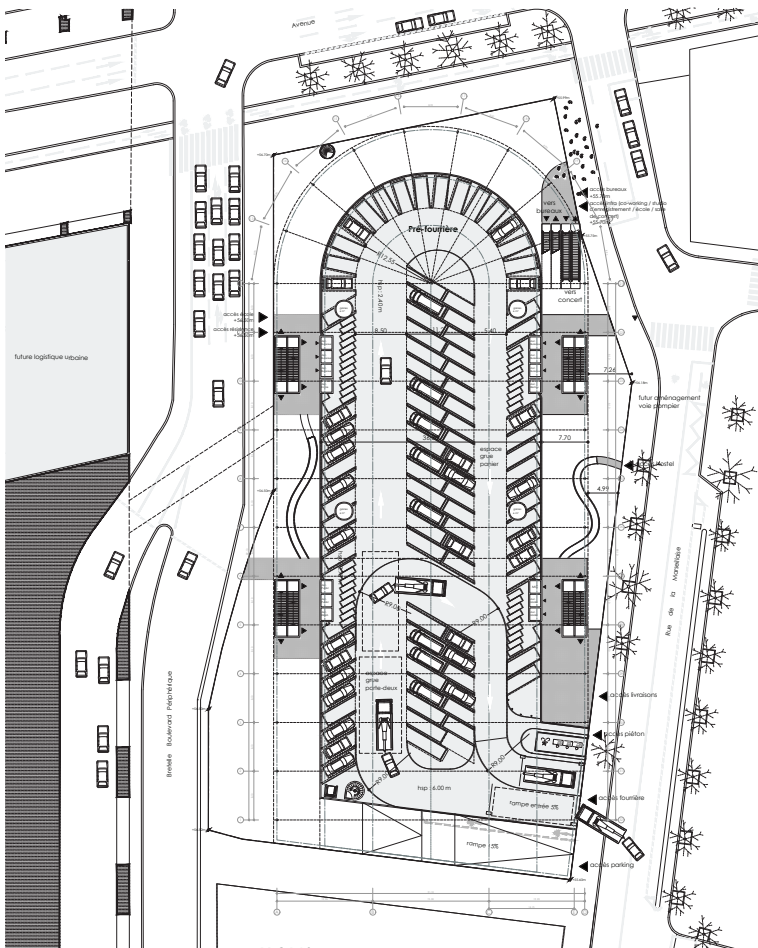
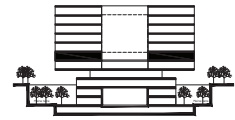
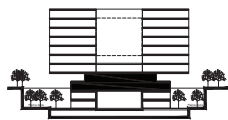
44



garden level  
1/500°



longitudinal section  
1/500°



ground floor  
1/500°



level 2  
1/500°

## **LABELS 2**

### **Showroom, fashion and innovation center in Berlin<sup>DE</sup>**

**The fashion center Labels Berlin 2 is a concentration of showrooms for international fashion brands in one building, including public spaces such as an event hall, a restaurant and a lounge on the top floor. The design strategy is based on the adjacent warehouse building Labels 1. The interior spaces of this historical building are strongly characterized by the repetition of arched windows used in the façade. This motif became one of the starting points for the design of the project. The use of two differently cut sine curves generates a specific aesthetic for both the supporting structure and, in a modified form, for the façade. The result is that the structure and rhythm establish a formative motif for the perception of the new building and link it to the existing neighborhood. Connected by a heat exchanging device, the whole concrete structure of the building is permeated with water tubes and used as a radiator for heating as well as cooling. The energy consumption for heating and cooling of Labels 2 Berlin is reduced by 40 percent due to this combined technique of activating the building mass and using water from the Spree River. HHF won the international competition between selected architects in September 2007. The building opened in January 2010.**

Program Showroom and fashion center  
Client LABELS Projektmanagement GmbH & Co. KG  
Location Osthafen, Berlin, Germany  
Area 8'191 m<sup>2</sup>  
Cost 11 M €  
Year 2010  
Awards Carparol Award 2012, Architekturpreis Berlin 2013



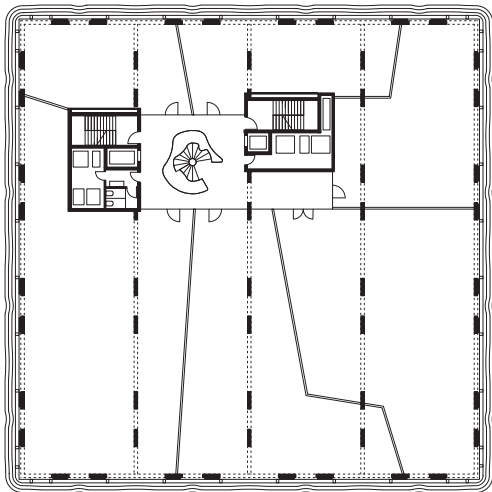


48

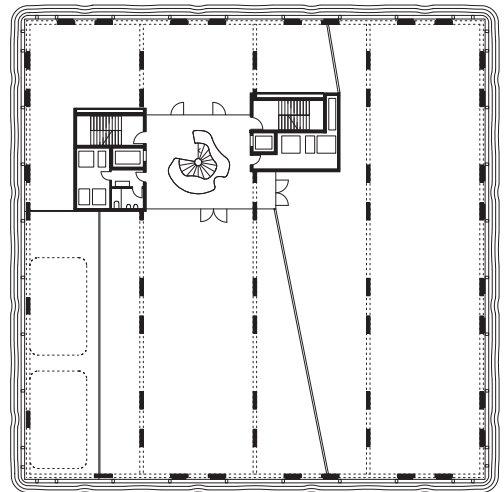


Places





Level 3



Level 4









# MALL OF KU'DAMM

## Shopping mall in Berlin <sup>DE</sup>

In the former center of West Berlin, a few steps from the Kaiser Wilhelm Memorial Church, Berlin's biggest shopping mall will be built in the triangle between Kurfürstendamm, Augsburgerstrasse, and Rankestrasse. An invited, international architectural competition, won by HHF Architects, was held for the design of the facades of the seven-lot perimeter block. The winning design proposes seven distinctive glass facades that are evocative of traditional punched window facades. The starting point for the design is the fact that the spatial disposition of the sales areas has no relationship whatsoever to the facades, and that the layout within the building must be capable of being changed at any time. HHF solves this challenge with a transparent curtain wall skin of vertical and horizontal glass blocks. The varied facades articulate the individual buildings in such a way that the underlying building structure can be noted from the outside, yet its design takes only limited account of the internal organization. The project embraces the rhythm of typical Berlin stone facades and unifies the originally subdivided perimeter block of the mall into a larger whole. The facades technically consist of an inner and an outer skin, which permit

Program  
Client  
Location  
Area  
Gross floor area  
Year

Renovation and extension of a shopping mall: façades, courtyard, roof-top  
Berlin, Kurfürstendamm 231 Immobilien GmbH & Co. KG  
Kurfürstendamm, Berlin, Germany  
façades : 9'344 m<sup>2</sup> ; roof-top : 5'078 m<sup>2</sup> ; renovation Rankestrasse 5-6 : façades 1'220 m<sup>2</sup>  
6'680 m<sup>2</sup>  
2015 -

**views of the inner workings of the building and convey daylight from outside to inside and, at night, transport lighting moods from inside to outside. In**



**addition, the formerly independent buildings are joined by the roof garden, which is in part publicly accessible and by a central courtyard. The courtyard has several curved terraces clad with a slightly reflective facade whose translucent tiles echo the glass block theme.**







## DOM REVOLUCIJE

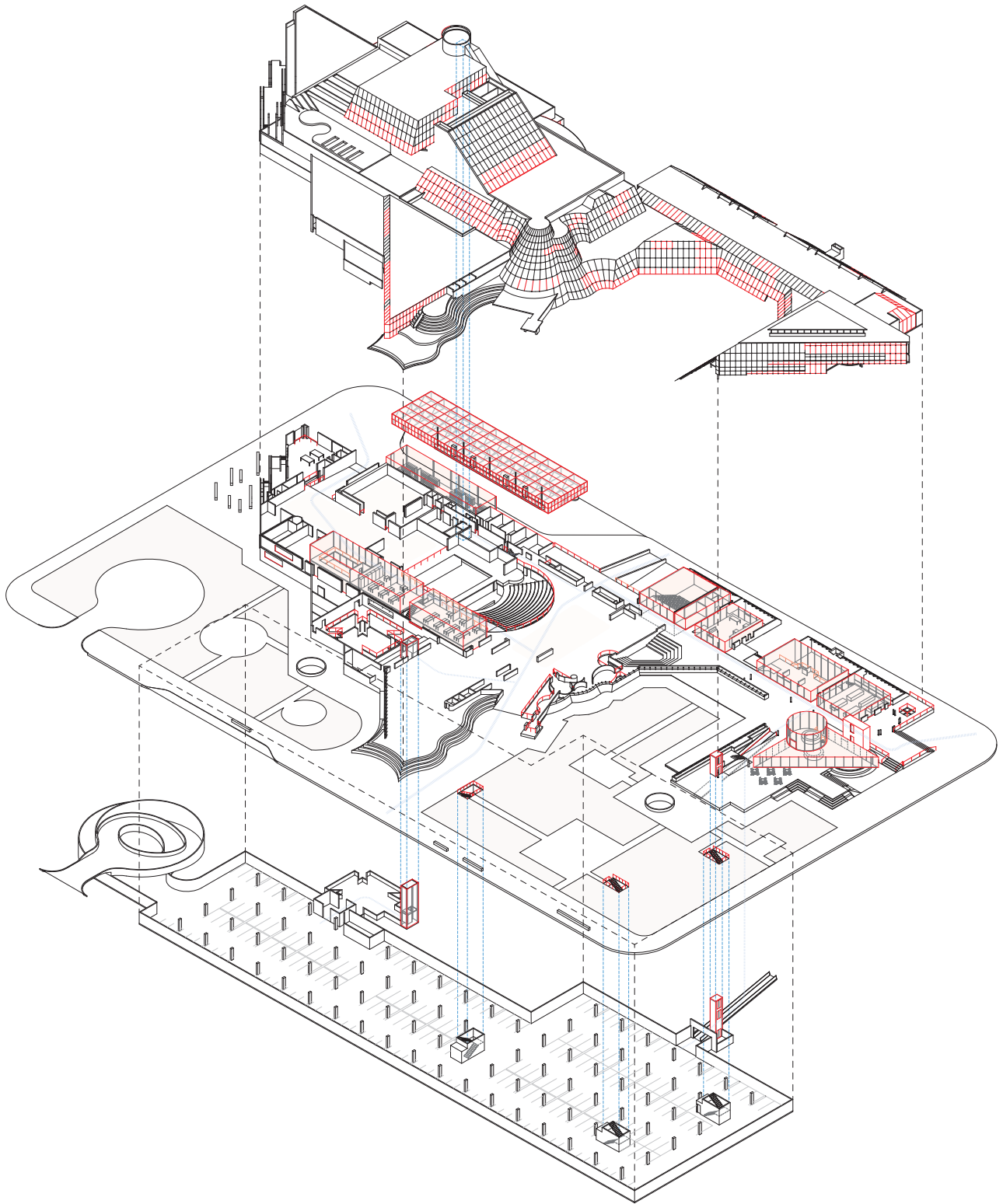
### Reconstruction of a cultural center at Nikšić <sup>MNE</sup>

HHF and SADAR+VUGA won a competition for the reconstruction of the House of Revolution in Nikšić in Monténégro, a downtown cultural center originally designed by the Slovenian architect Marko Mušič. Erected in homage to the socialist revolution, it was to house a monument to fallen partisans, a theater, a music school, and other social spaces, but it was never completed. Taking the existing project as a covered landscape, the reuse concept opts for minimalist, pragmatic interventions in keeping with the needs of the city. The final strategy comprises 10 percent new usage, 20 percent complete restructuring, and 70 percent conservation and restoration. The ground floor level seamlessly prolonging a vast green outdoors space is intersected by two promenades that root the DOM in its broader urban fabric, while the insertion of a large underground car park makes it a new gateway to the city. Visitors arriving by car are at liberty either to enter the DOM and explore its social and cultural programs, or to leave by its southern exit and head for the historic city center. There too, the concept initiates new uses by privileging low-key circulation: road networks are freed up to create space for cafe terraces, pedestrian zones, and children's playgrounds.

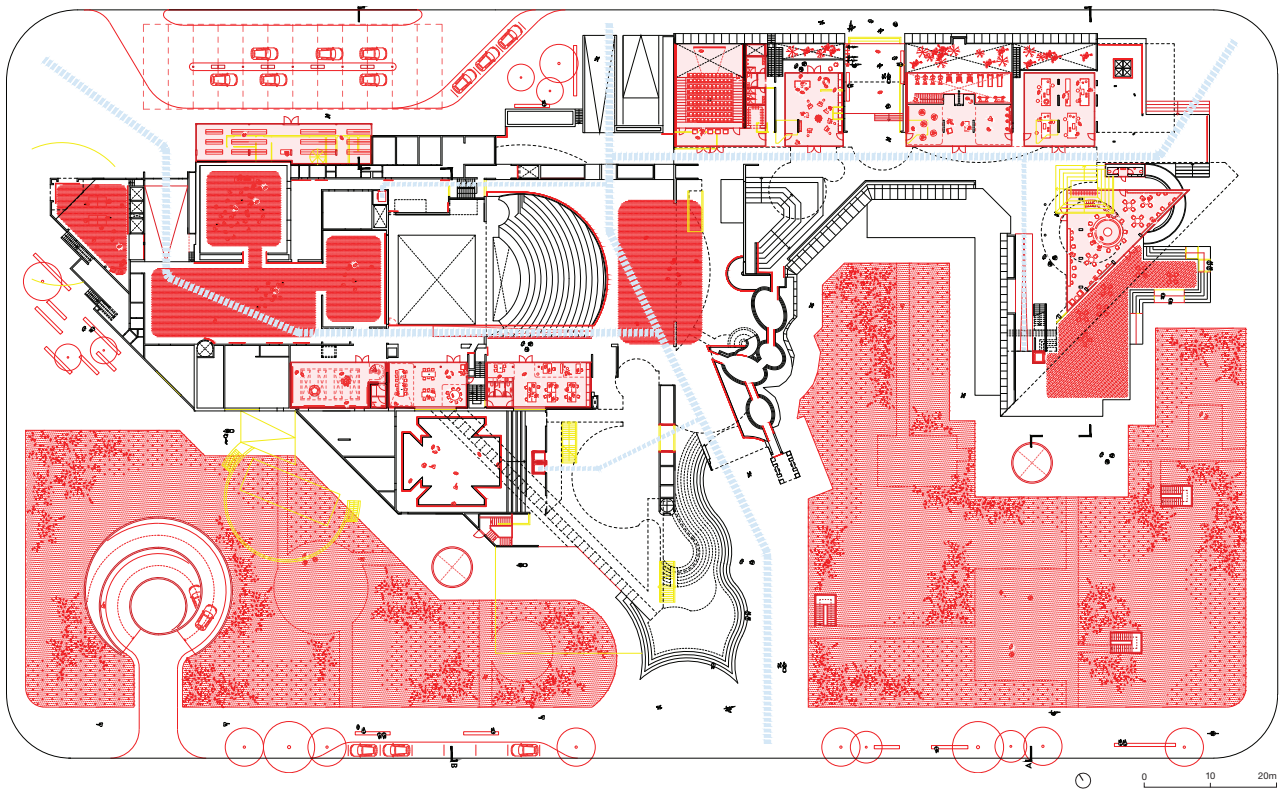
Program  
Client  
Location  
Area  
Cost  
Year  
Team

Cultural center  
Ministry of Sustainable Development and Tourism Montenegro  
Nikšić, Montenegro  
21'738 m<sup>2</sup>  
20 M €  
2016 laureate  
HHF with SADAR + VUGA





Axonometry of the project with the promenade and extensions



Ground floor

# KIRSCHGARTEN MENSA

## School extension in Basel <sup>CH</sup>

**The Kirschgarten project integrates a canteen into the existing open lobby of an important school building located in the city center of Basel. Ribbons made of wood are offset from the existing floor, wall and ceiling. These ribbons reach out between the concrete structure toward the courtyard, creating a solar screen and a terrace where people can sit and eat. This gesture links the interior space to the outside and enables direct access from that courtyard. On the interior the wood facing traces the existing concrete structure. A glass facade, which appears almost invisible when viewed from the outside, works as a thermal barrier. This makes it possible to maintain the previous outer appearance of the building with its slim columns. As a landmark building designed by the Swiss architect Hans Bernoulli, every intervention must be reversible. The project reacts to that requirement; the construction of the interior wood facing maintains a minimal number of connections to the original structure. The color concept with its different shades of grey was developed in collaboration with the Swiss artist Gido Wiederkehr.**

Program Restaurant / canteen  
Client Hochbau und Planungsamt, Basel-Stadt  
Location Basel, Switzerland  
Area 240 m<sup>2</sup>  
Cost 1,07 M CHF  
Year 2008  
Awards Best architects 2009 Auszeichnung guter Bauten 'Gold' Basel-Stadt/Basel-Land





64



Places





# **CONFISERIE BACHMANN**

**Tea house in Basel <sup>CH</sup>**

**Confiserie Bachmann is Basel's most traditional and best known chocolate manufacturer, specializing in high-quality sweets. HHF completed the renovation of the Confiserie Bachmann flagship coffee house and chocolate shop in 2009. With this renovation, this local brand which is also well known in Switzerland - got an elegant and contemporary look that has adapted the characteristic qualities of the previous chocolate shop. The renovation optimizes its location by reorienting itself not only to the street, but also to a covered passageway with outdoor seating. An inviting coffee bar flooded with light, the arrangement of the glass sales cabinet, the counter, the furnishings, the bright colors - is all designed to create a new openness to the street and to the covered passageway. Although the space is small, the renovation creates a spacious yet intimate atmosphere through the use of reflection and color. Atypical of chocolate shops, the white color creates a light and spacious atmosphere that is balanced by chocolate-colored furniture. The offsetting mirror system embedded into the main wall reflects diagonally to create the perception of depth and complexity.**

Program Tea house, café-bar  
Client Confiserie Bachmann AG  
Location Basel, Switzerland  
Area 92 m<sup>2</sup>  
Cost 1,2 M CHF  
Year 2009









# Experiences

## **POISSY GALORE**

### **Folies and museum in Carrières-sous-Poissy <sup>FR</sup>**

**The series of buildings and pavilions designed by AWP and HHF are part of a new 113 ha large public park along the Seine river, in Carrière-Sous-Poissy, located in the Greater Paris area and close to Le Corbusier's renowned Villa Savoye. The park – designed by agence TER – is an ecological showcase and a leisure destination for people living in and around Paris. The site of the project is exceptional. Along one edge is the Seine river. The presence of barges, fishing huts and houseboats, which have inhabited it until now, has been a powerful source of inspiration. Along the other edge is nondescript, suburban detached housing. The design springs from a process of hybridization between these two existing habitat models. Among other public infrastructures such as a visitor's center, a restaurant and an observatory, the competition brief included the construction of a museum to exhibit a large collection of insects, both living and conserved. With the exception of the observatory, which is a steel construction, the collection of pavilions and small «folies» is based on a modular wood system, repeating and combining different sized and angled timber frames. This approach allowed for interesting and unusual constructions, enabling a wide range of possible variations with a**



<u>Program</u>	Observatory, insects museum and visitor center
<u>Client</u>	Communauté d'Agglomération Deux Rives de Seine
<u>Location</u>	Carrières-sous-Poissy, France
<u>Park</u>	113 ha
<u>Area</u>	1'900 m <sup>2</sup>
<u>Cost</u>	5,2 M €
<u>Year</u>	2016
<u>Team</u>	HHF with AWP

**limited number of elements. At the same time the low priced construction method enabled the integration of local building know-how and local companies.**









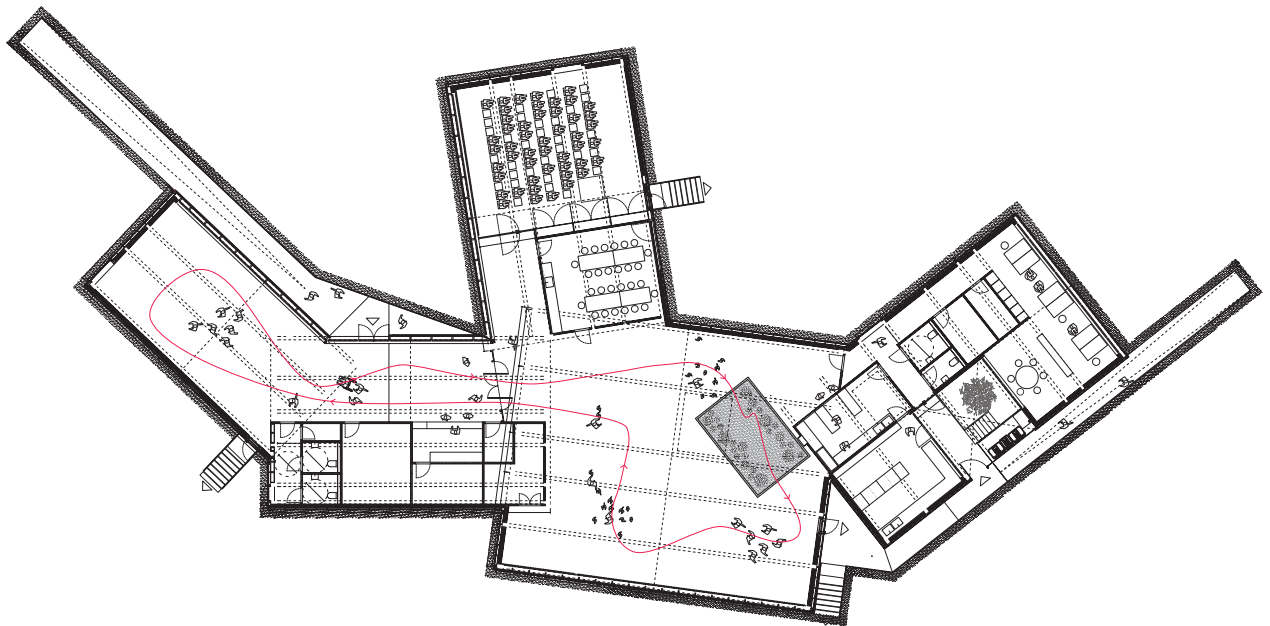




78



Experiences



Floor plan of the insects museum

## **BABY DRAGON**

### **Pavilion in Jinhua<sup>CHN</sup>**

**The “Jinhua Architecture Park“ is an important part of the urban redevelopment of the city’s new Jinhua district. The park landscape is designed by the artist Ai Weiwei, and its 17 public structures are designed by 17 international architectural teams and artists. Considering the difficulties of controlling the construction over such a long distance, we designed a structure with very few details. Through its location in the park, the Baby Dragon creates a boundary between an open lawn and a space under future evergreen trees. The three shelters of the pavilion create different conditions of intimacy, control and usage, allowing for different ways of interaction for different visitors, from children, to grown-ups, to the elderly. The structure is built completely of colored concrete. Only the floor of the pavilion is partly covered by the same grey brick as used for the paths, which connects it to the materiality and the circulation pattern of the entire park. The massive wall is perforated from both sides so children can climb through from one side to the other. Some of the openings are just large holes, while others are tangentially connected. The openings are the result of a system of eleven different forms which can be added together in an**



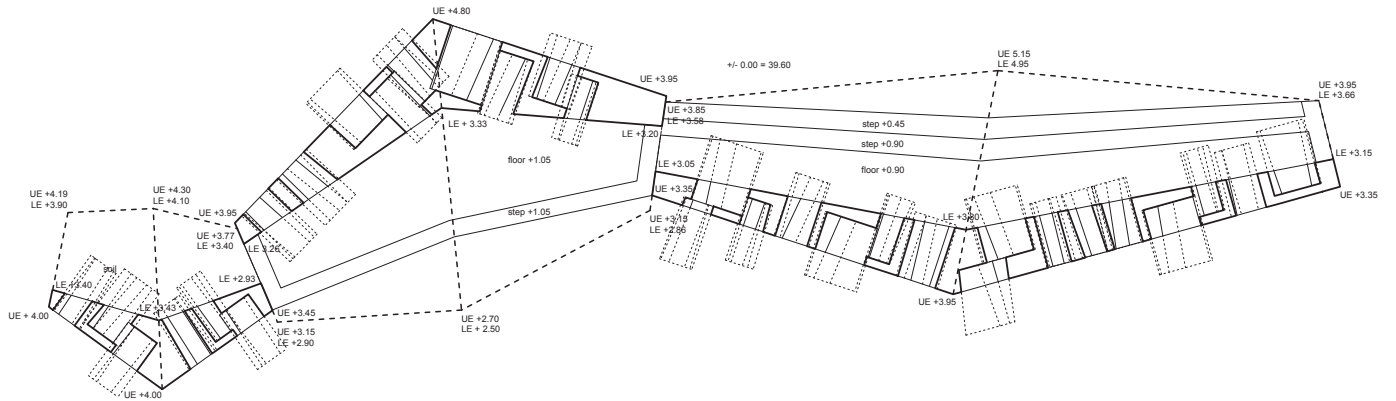
Program Pavilion for children in the Jinhua Architecture Park  
Client Jingdong New District Constructing Headquarters of Jinhua City  
Location Jinhua, Zhejiang Province, China  
Dimensions 30 m × 4.5 m  
Year 2006

**endless pattern. Various combinations of complex openings are possible and the result is a highly differentiated three-dimensional structure.**





82





# RUTA DEL PEREGRINO

Observatory <sup>MX</sup>

117 kilometers across Jalisco, Mexico, it is traveled every year by over two million pilgrims from all over country as an act of devotion, faith and purification. The pilgrims begin in the town of Ameca from where they walk through the mountain range of Jalisco to the town of Talpea de Allende to see the Rosario Virgin. The pilgrims are of all ages and generally have a low to modest income. In an effort to improve travel conditions and enhance the experience of Ruta del Peregrino, the project curators invited an international team of architects to create a series of stations at key points along the route. The stations enhance the symbolic importance of the route and add a sense of permanence by providing basic services, such as shelter and look out points. They provide spaces of serenity, inspiration and introspection, assisting the pilgrims' emotional journey. The HHF lookout point is designed to be an additional loop in the pilgrim's path. Its round shape was developed as a formal anticipation of the pilgrims' movement through the platform - ascending to enjoy the great view across the surrounding countryside, before redescending. The asymmetric arched openings provide access to an open hall which is covered by the platform above. The inner walls are a shifted repetition of

Program Observatory  
Client Secretaría de Turismo de Jalisco  
Location Espinazo del Diablo, Jalisco, Mexico  
Dimensions 75m<sup>2</sup>  
Year 2010  
Awards Wallpaper\* Design Award

Other invited architects and artists  
Ai Weiwei / Fake Design (China), Luis Aldrete (Mexico), Tatiana Bilbao (Mexico), Christ & Gantenbein (Switzerland), Dellekamp Arquitectos (Mexico), Elemental (Chile), Godoylab (Mexico), HHF (Switzerland), Periférica (Mexico), Taller TOA (Mexico)

**the primary facade resulting in four tangential circles, between which the two staircases define a route up to the platform and back down. The only**



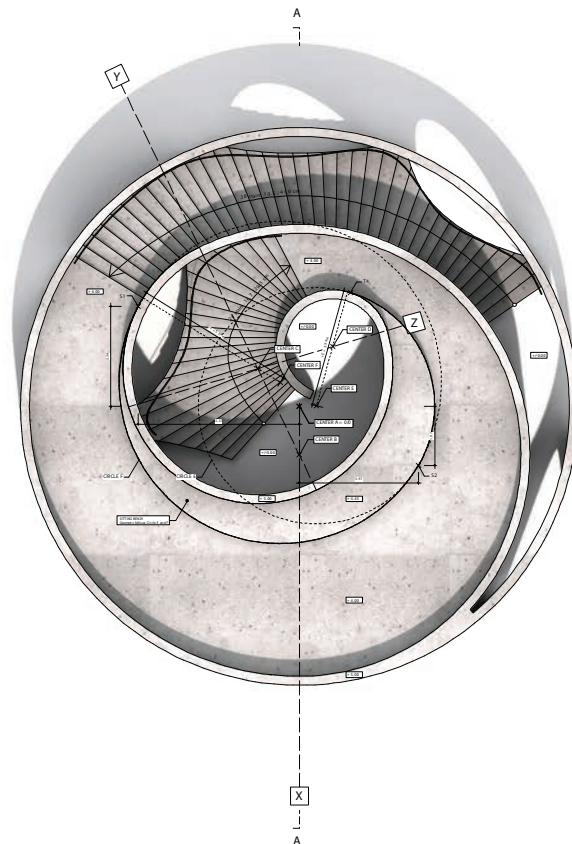
**exception to the curved shape is a brick wall with a cross-shaped opening in the most protected part of the building, serving as an intimate room, providing space for rest and prayer.**



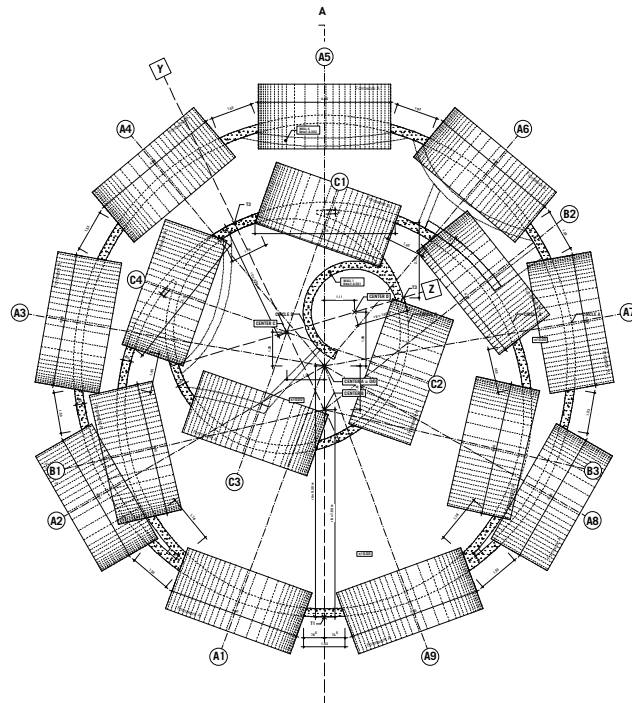




88







# TEMPORARY STRUCTURES

## The pavilion: an exhibition module

HHF has always devoted a good part of its efforts to developing pavilions for temporary occasions such as festivals, biennales, and sporting events. Such structures are a low-risk, low-cost tool for experimental research into spatial solutions and new construction methods. They are also by nature exempt from a number of thermal and acoustic regulations, which opens up lots of leeway for radical proposals. Their temporary character demands that thought be given to their prompt assembly and disassembly; and of course, to a light environmental footprint, the provenance and future recycling of materials being intrinsic to the matter in hand. Developed much faster than classic projects, these prototypes tend to focus an immense creative energy. Deployment for cultural or sporting highlights generally puts them firmly in the public eye, at heavily frequented locations. Their interest lies therefore both in the particular relationships they engender through public interaction and exposure, and in the debates and inquiry they inspire.

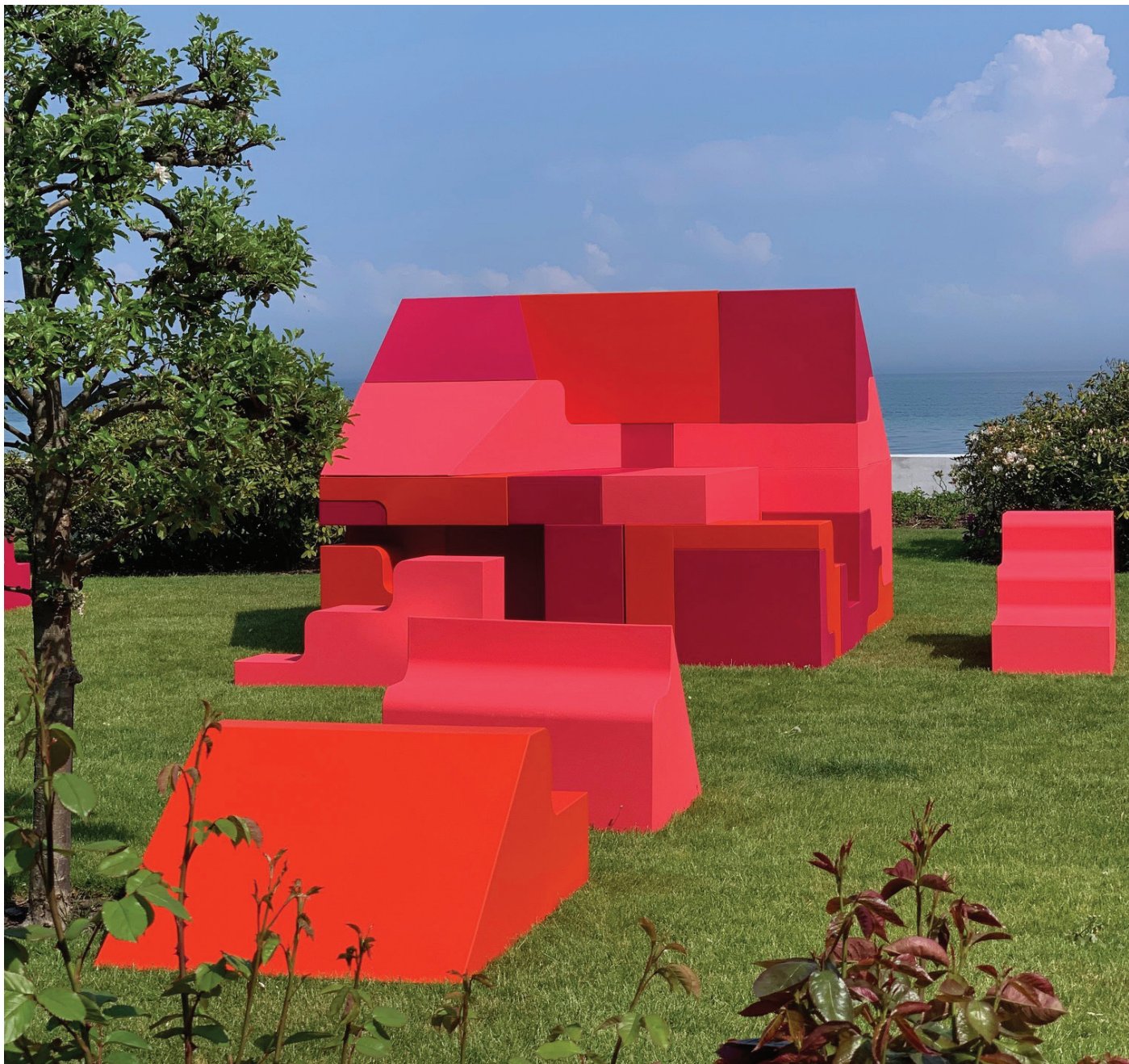


ZeitRäume, temporary pavilion for the first biennial of contemporary architecture and music in Basel, Switzerland.



92





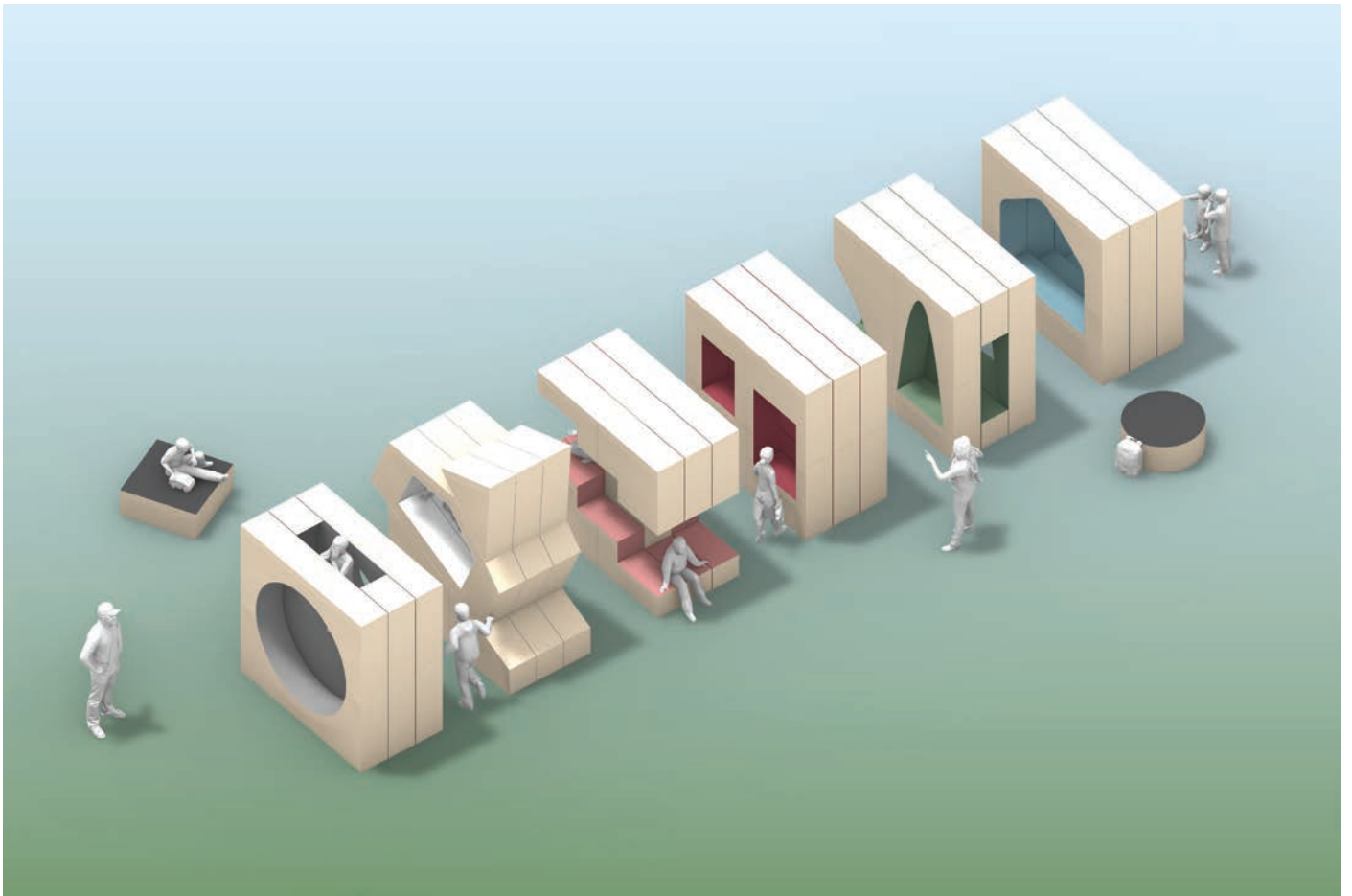
93



Puzzle House, a Swiss-Danish collaboration between HHF and BIG.



Summer school pavilion "Little Helpers International Summer School"  
Design and workshop led by HHF, MAIO and KOSMOS



The Playful Eight, "How Will We Play Together?",  
17th International Architecture Exhibition, Biennale di Venezia, 2021

# ARTFARM

## Art gallery and storage in New York <sup>USA</sup>

The Artfarm is situated in upstate New York on the estate of an art collector and gallery owner. The villa by architect John McFayden, situated on the top of a hill, was to be supplemented by an art facility that was to be both a gallery and storage space. The building is divided into several exhibitions spaces of varying sizes and into areas designed especially for storing artworks. The outer form is a direct consequence of the prefabricated galvanized iron sheets often used in the area for agricultural utility buildings. Because of its abstract outer form and the metallicly shining appearance, the building becomes an equal participant among the sculptures and objects scattered throughout the surrounding landscape. The volume had to be as large as possible, but nevertheless inexpensive. A showroom and storage space could scarcely be realized by simpler means. Nevertheless, the simple utility construction, costing no more than around 250,000 Euros, fits perfectly into the surroundings with the scattered art objects. From the outside its function remains enigmatic; on the inside you might imagine you were in another world. This impression is reinforced above all by the cladding of the interior spaces, which seems like upholstery with large



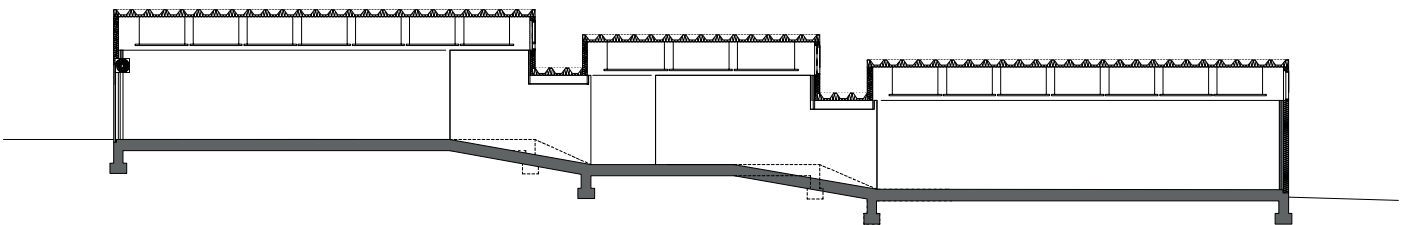
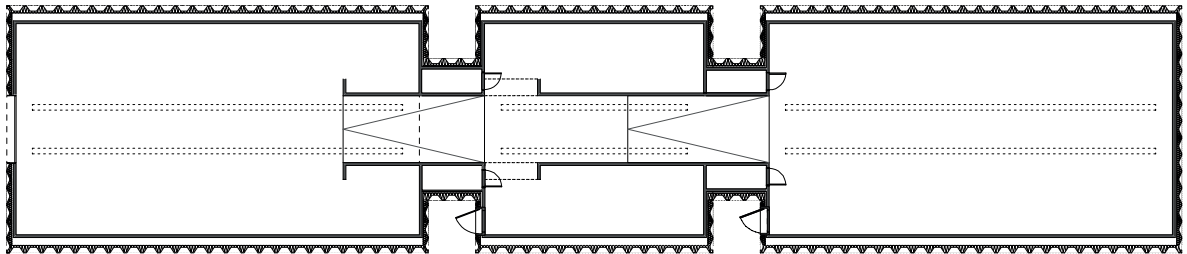
<u>Program</u>	Gallery and Art Storage
<u>Client</u>	Christophe W. Mao / Chambers Fine Art
<u>Location</u>	Salt Point, New York, USA
<u>Area</u>	383m <sup>2</sup>
<u>Year</u>	2008
<u>Distinctions</u>	Contractworld Award 2010, Best architects 10 in gold
<u>Team</u>	HHF with Ai Weiwei

**buttons. The shell was insulated and clad in white PVC foil which not only reduces heating and cooling costs to a minimum, but also helps soundproof the**



**building acoustically. This is essential for a place calling for high levels of concentration.**











# Collective

## AUX ENTREPÔTS RENENS

Flexible housing with strong identity in Lausanne <sup>CH</sup>

Angular, shimmering brick veneer facades in green, yellow, aubergine, and red gives a strong identity of HHF Architects' new master plan in Renens. The ruggedness and simplicity of the bricks are evocative of the site's industrial history, while the glazed surfaces contribute to the lively atmosphere of the area. Once you enter any of the three- or four-storied buildings, you instantly know which one you are in, since the inner ceilings in semi-public spaces are painted in corresponding colour. Equally applied on the underside of the spiralling concrete staircases, which creates a near-psychedelic effect. The exterior hues are correspondingly applied on the windowsills, balcony fences and retractable awnings. The concept mixes of different housing types and standards, from mini lofts designed for flexible use to family apartments and penthouse units with generous rooftop terraces. Facilities for the general public are teamed with the deep mini lofts modelled on Dutch examples, which enlivens the ground floor of the urban building ensemble. In all the four vibrant buildings contain a total of 70 dwelling units along with studios and retail space. The tenants of Aux Entrepôts moved in in June 2021, adding another layer of life to the area adjacent to the Renens Station.



Program Mixed-Use: housing and commercial  
Client SBB Immobilien  
Location Renens, Lausanne  
Gross Floor Area 5'853 m<sup>2</sup>  
Cost 18.5 M CHF  
Year 2016 -2021, Finalised June 2021  
Team HHF



105





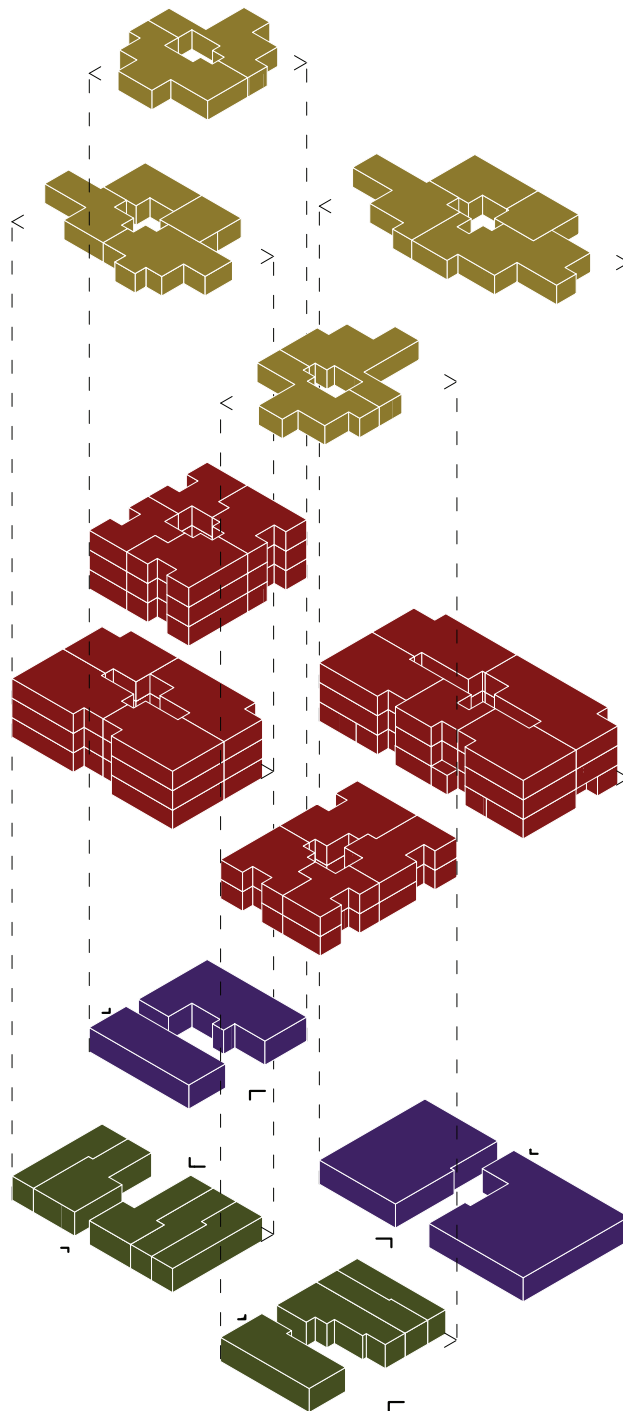




108



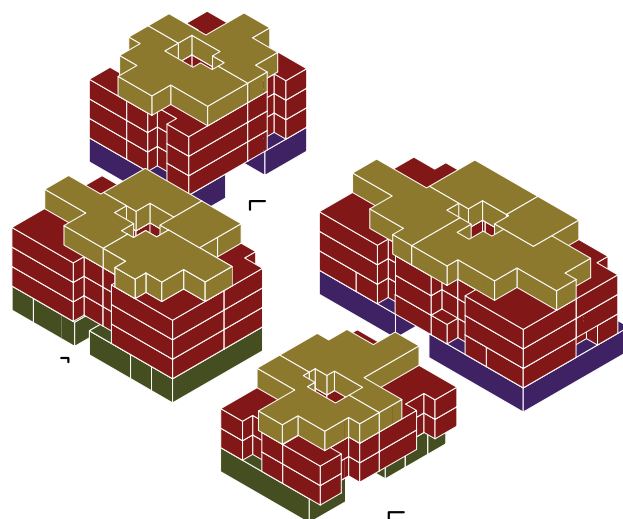
Collective



ATTIC FLOOR  
Apartments with  
views and terraces

1.-3. FLOOR  
Standard apartments

GROUND FLOOR  
Ateliers apartments  
and public areas

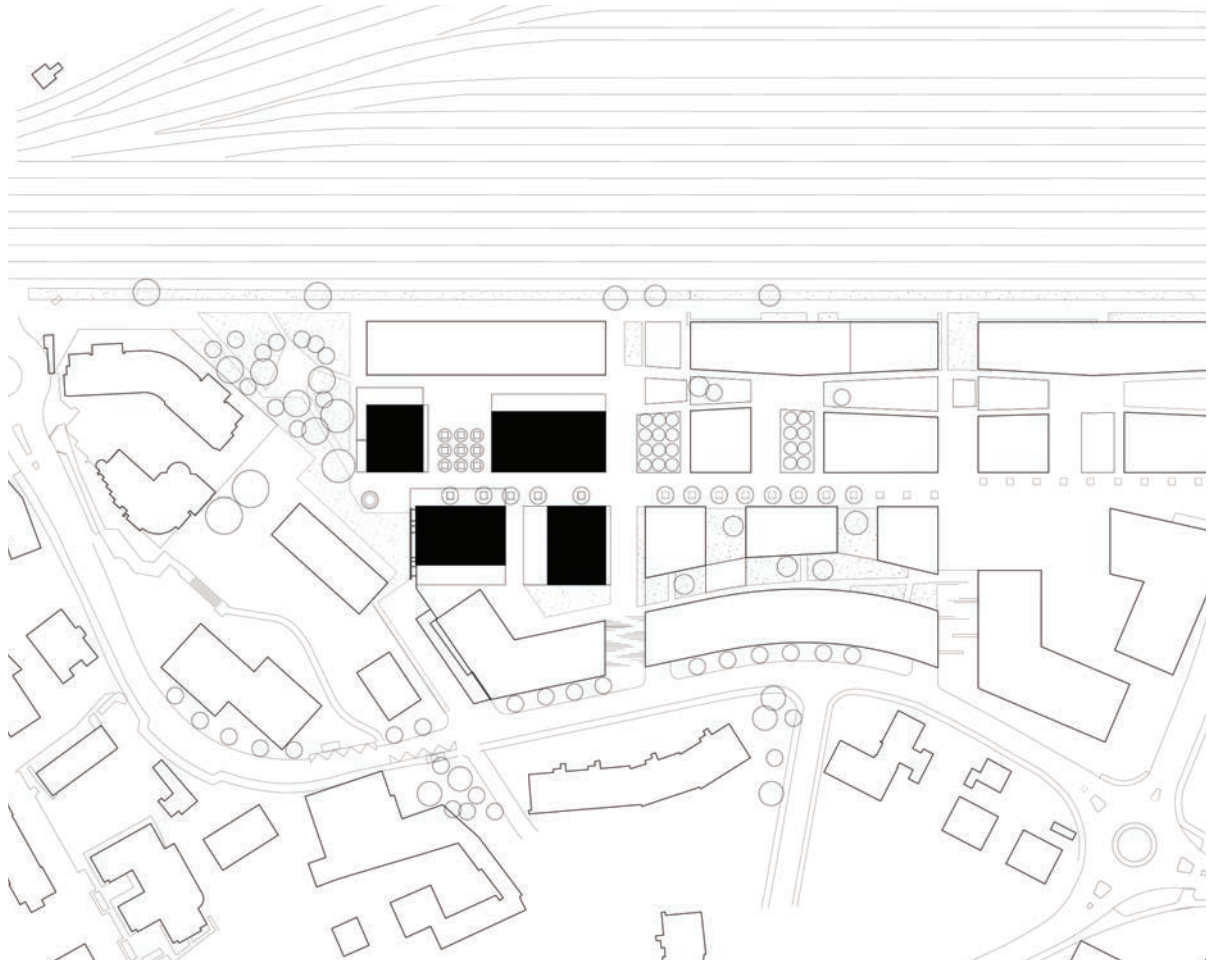


Typology mix

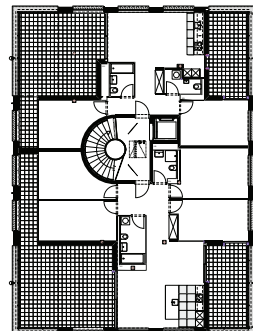
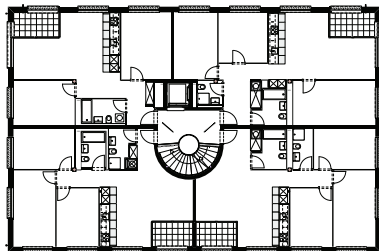
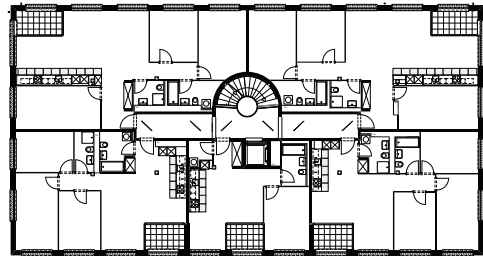
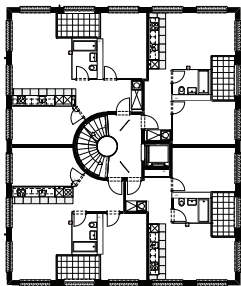


110





Master plan



Standard floor plan

# STARLETTE

## Mixed-use quarter on the Rhein <sup>FR</sup>

HHF won the international design competition for Starlette, a major development of the urban Strasbourg Deux-Rives area along the Rhine and the Independent Port of Strasbourg. The urban block with a total of 35,000 m<sup>2</sup> offers a large variety of public and private mixed-use programs, including more than 200 apartments, 20,000 m<sup>2</sup> offices, co-working spaces, restaurants, parks, day-care facilities and an indoor swimming pool. You could even say that the six buildings will form a small riverside town in its own right. The cardinal orientation and the openness of the development, thanks to the vertically staggered blocks – from three to 20 storeys high – allow for optimal natural light as well as views to the Rhine and the city from all buildings. Outdoor vistas on various levels are offered from wood-capped terraces. To allow for flexibility upon completion and in the future, the ceiling heights are extended to 290 centimetres, suitable for both private and commercial use. Starlette, designed in collaboration with Dominique Coulon & Associés and Estudio Tatiana Bilbao, has been somewhat delayed due to the pandemic. It broke ground in the spring of 2021 and will be completed in 2023.

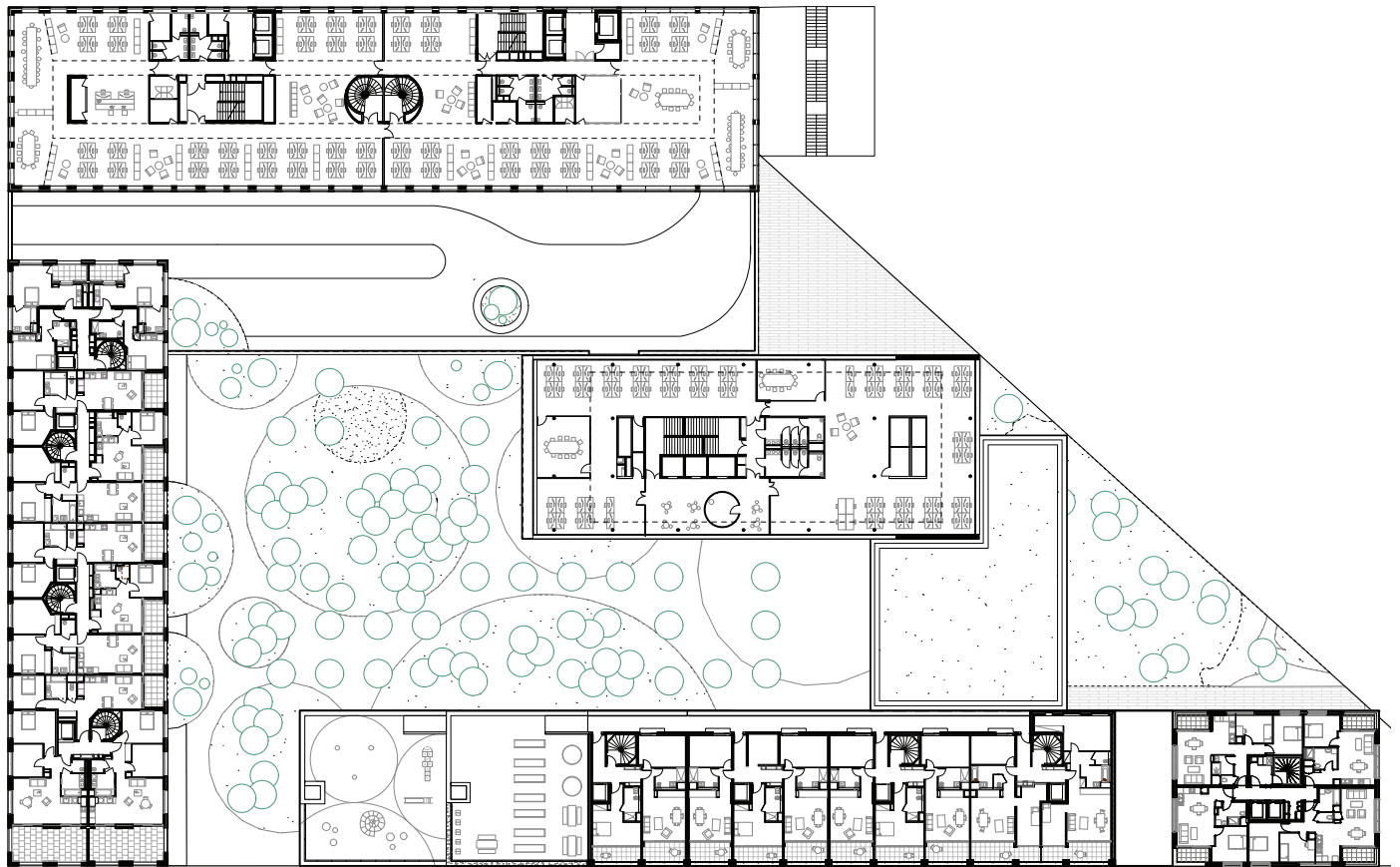


Program Urban block, mixed-use : residential,  
offices, restaurants, indoor swimming pool and daycare  
Client Kaufman & Broad, Paris and Stradim, Entzheim  
Location Strasbourg, France  
Area 35'000 m<sup>2</sup>  
Cost 60 M €  
Year 2017 - ongoing  
Team HHF + Dominique Coulon & Associés + Tatiana Bilbao Estudio









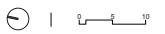
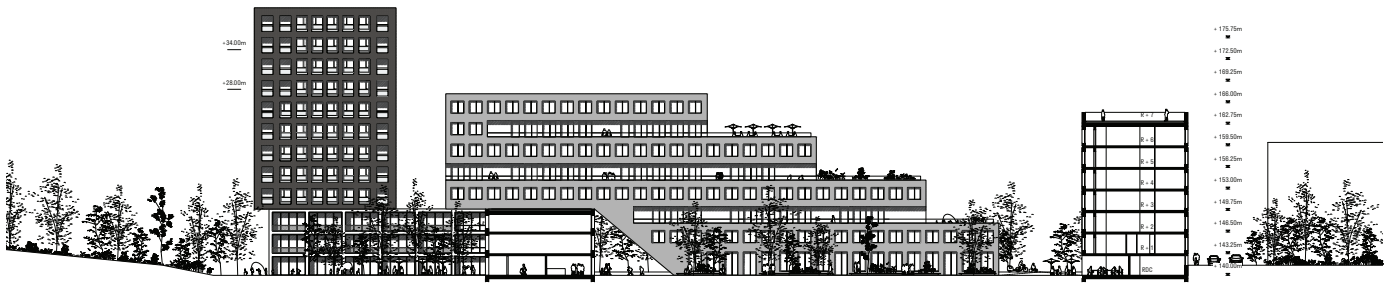
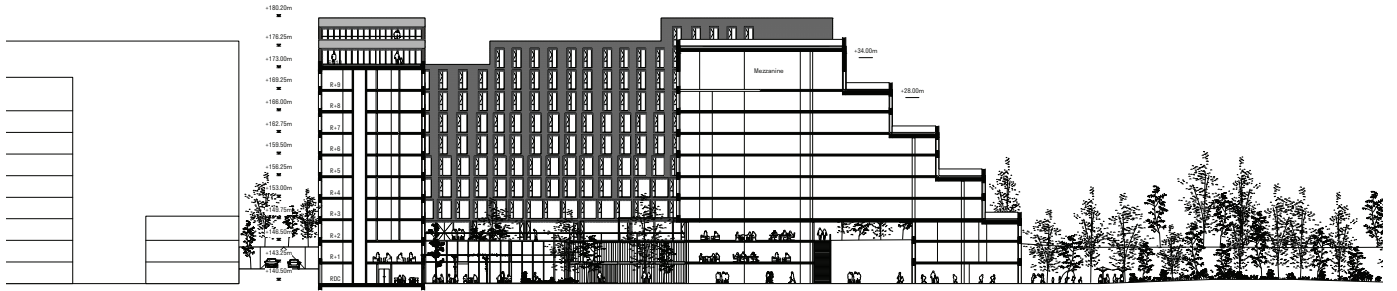
Standard floor plan



116



Collective



Section North-South

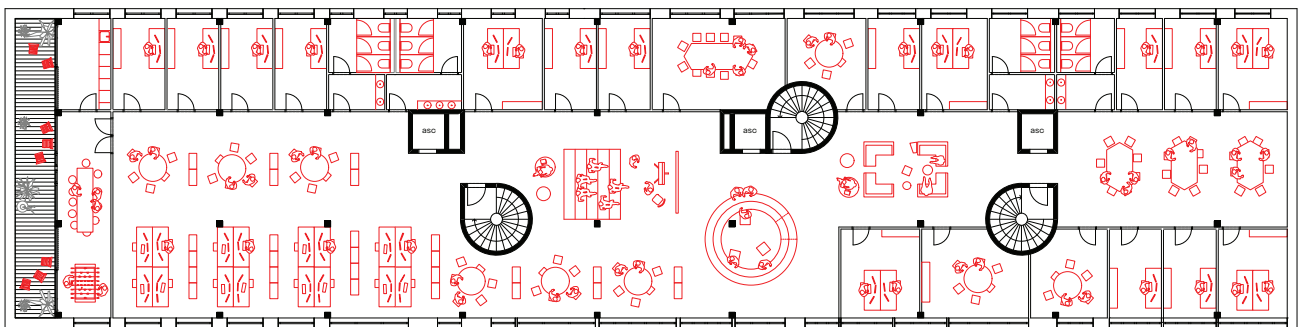




Vertically staggered blocks and terraces



Compositions of strata and gradients on the facade

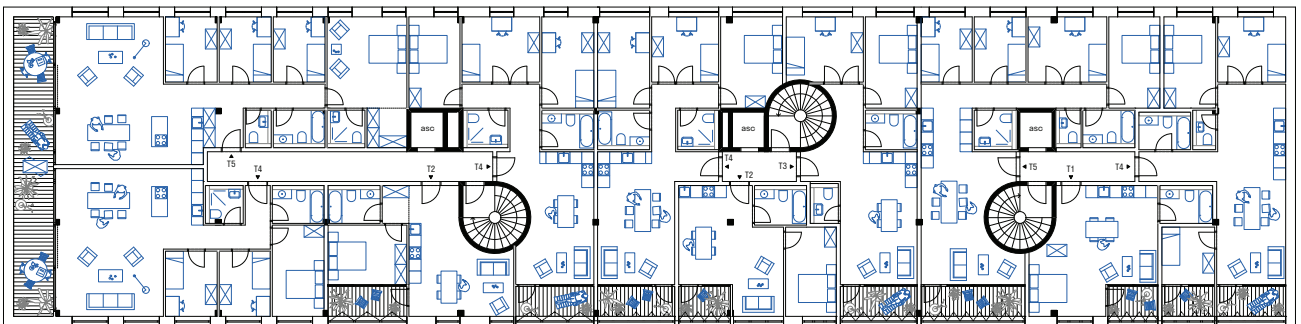


Collective





121



Transformation of offices into housing and vice versa

# JARDIN MÉTROPOLE

An expressive tower in Biel <sup>CH</sup>

HHF Architects succeeded in winning an invited competition with their design for a 30-meter-high apartment tower in the Biel community of Mett. With its distinctive shape – composed of three differently sized cubes piled up at different angles – the tower is destined to become the symbol of Mett and contribute to the area’s enhancement. The geometry and alignment of the discrete volumes relate to the neighbouring buildings, and each apartment has access to different green spaces: separate gardens with private planting beds, a shared roof terrace, and landscaped loggias are self-evident offerings for all the residents. The photovoltaic modules that are integrated in the loft-like facade, which is dominated by horizontal ribbon windows, generate a large portion of the energy needed to serve the apartments and the service-sector commercial areas planned for the two bottom stories. The tower building stands in the tradition of taller expressive buildings in Biel, like the well-known “La Rotonde”. Taking a cue from that building, the public ground-floor zone of the Jardin Métropole, with its bakery and café, has a circular plan. After being approved by the inhabitants of Biel/Bienne in a public vote, construction began in June 2021, and is due to be finalised in June 2023.

Program Mixed-Use: Housing, Commercial, Office  
Client Vitali's Generation AG  
Location Biel, Switzerland  
Area 2'675 m<sup>2</sup>  
Cost 10 M CHF  
Year 2016-2023  
Team HHF

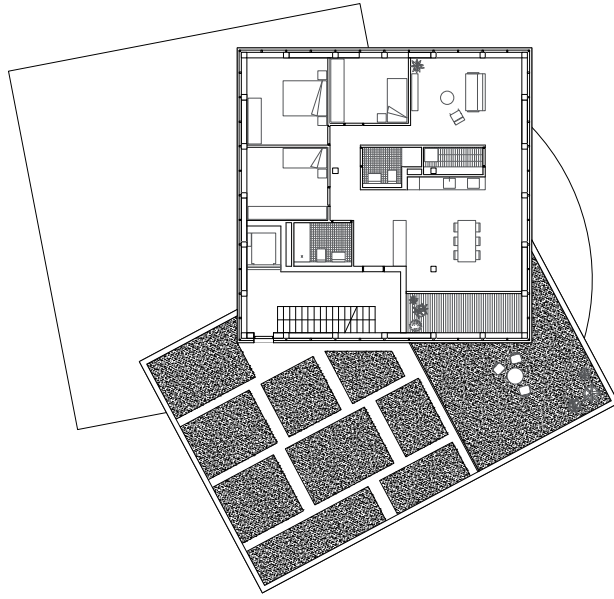




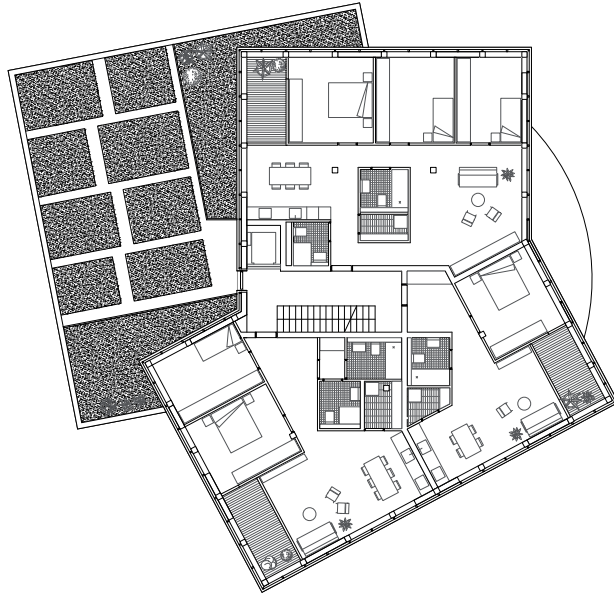
124



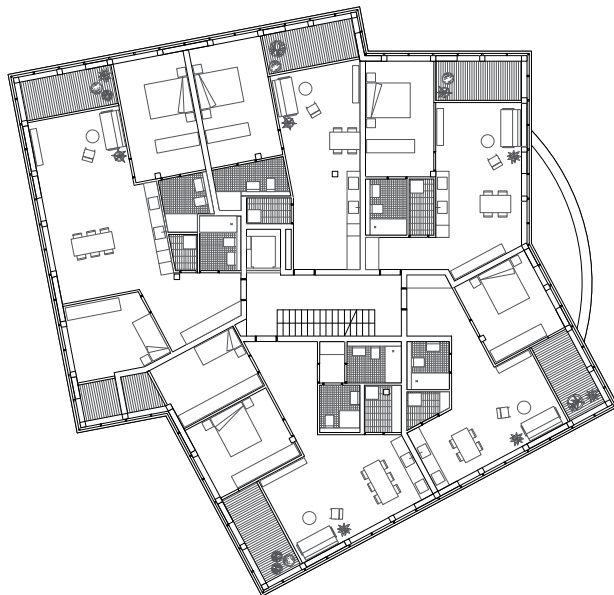
Collective



Level 5



Level 3



Level 1 and 2

# LANDSKRONHOF

## Densification brings nature closer to home<sup>CH</sup>

At Landskronhof – a Basel densification project within an existing multi-parcel courtyard – a lot of attention has been given to gardening and greenery for all, and not only on the ground floor. The terraces of the apartments, 15 in total, offer up to around 40 m<sup>2</sup> of gardening possibilities, and nature is invited not only by implementing greenery in the surroundings of the structure, but also with plants and vines climbing the surrounding firewalls of neighbouring garages, as well as on the vertical balcony rods emphasizing the facade. The cross-shaped structure with a white-painted spruce facade has a central core and its own underground parking garage, which allows for different types of apartments radially organised around the core. Expansions and setbacks in the building volume react to specific needs for sunlight, privacy and outside spaces. A series of private and semi-public courtyards provide different moments of intimacy and connect the two topographic levels of the site. The 15 apartments have between 2.5 and 5.5 rooms several of them with a maisonette solution – and living areas range from 52 to 151 m<sup>2</sup>.

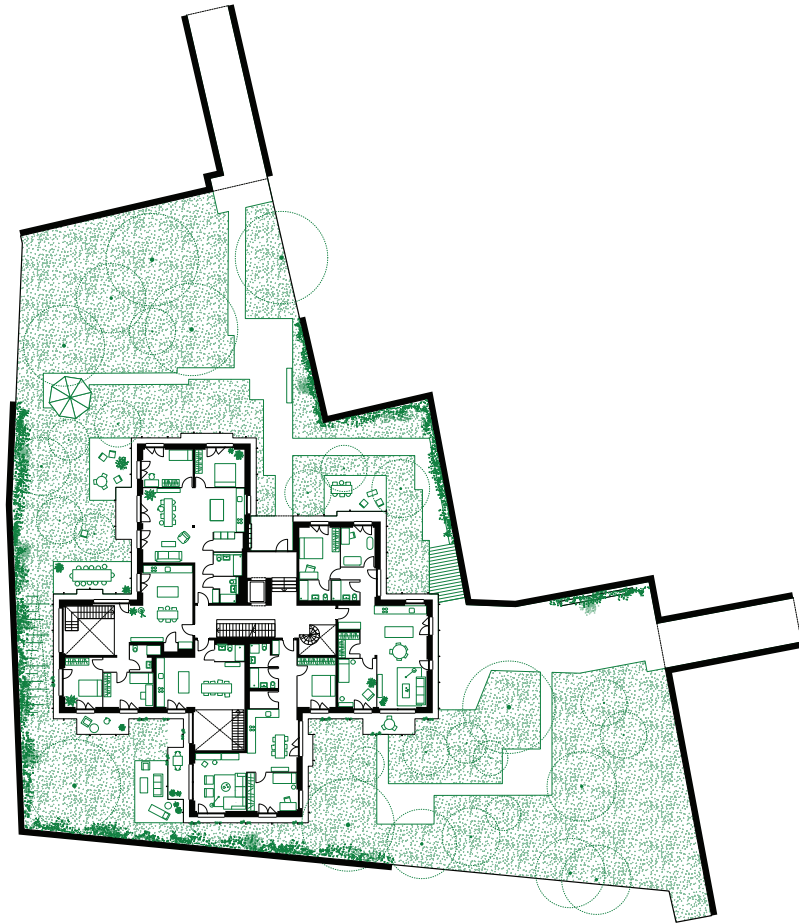
Program  
Client  
Location  
Area  
Cost  
Year  
Team

Housing  
Steiner AG  
Basel, Switzerland  
1540 m<sup>2</sup>  
10 M CHF  
2013–2022  
HHF





128

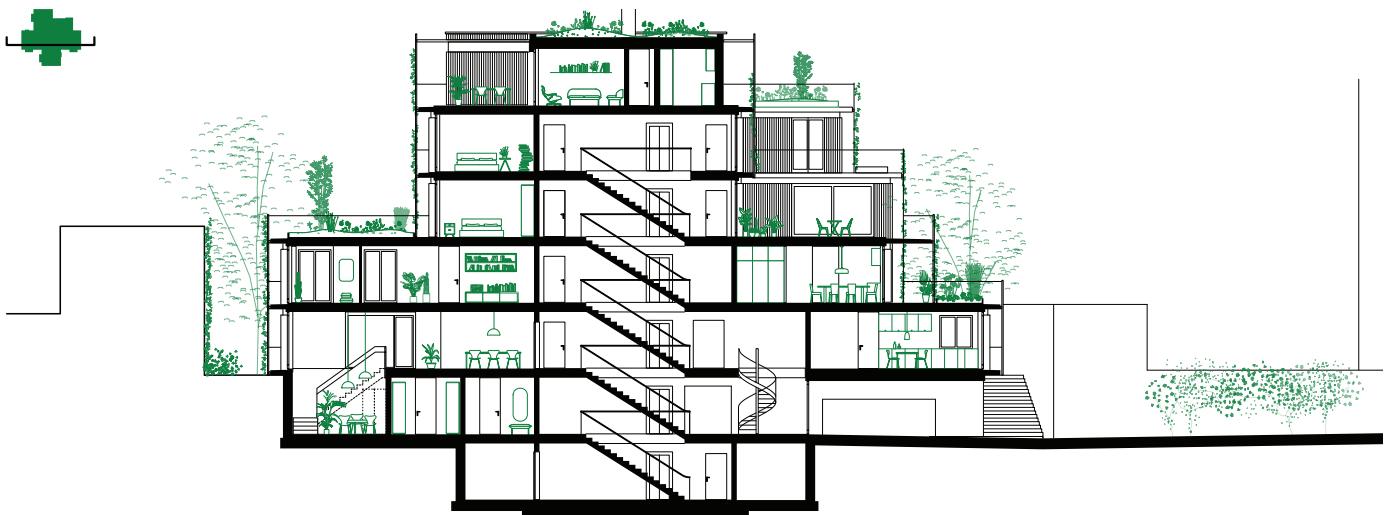


Ground floor



Collective





Cross section

# WEGGISHOF

## Wood-based BIM project <sup>CH</sup>

**The wood-based Weggishof – another invitational competition win from HHF Architects – is a mixed-use development in Weggis, constructed with an avant-garde use of BIM tools. Occupied since summer 2020, 39 apartments made of prefabricated wooden elements are intersected with a bracing concrete fundament, which houses 1,200 m<sup>2</sup> of commercial space. All flats, ranging from simple studios to five-room apartments, are double faced and in contact with the green, seasonal and biodiversity-oriented courtyard. A digital workflow was crafted to allow for dimensional steering of the prefabrication of the standardised wood elements. This kind of Building Information Modelling (BIM) was also used for the balustrades. The building nestles into an existing natural U-shaped slope, which allows for structural diversity. Storey heights are staggered to let the new building blend in with the surroundings without blocking the view of the lake from existing structures. Inside the building the terracing is reflected by letting the ground floor units cover the rear slope with a double-storey space. On the upper floors, all flats are single-storey. Interestingly the 39 flats offer a small and**

<u>Program</u>	Housing, Commercial
<u>Client</u>	Einfache Gesellschaft Amrein-Tellenbach-Widmer
<u>Location</u>	Weggis, Switzerland
<u>Area</u>	7'000 m <sup>2</sup> building
<u>Volume</u>	23'900 m <sup>3</sup>
<u>Cost</u>	24 M CHF
<u>Year</u>	2014-2020
<u>Team</u>	HHF

**large version of each of the different flat types. The aim was to offer spatially comparable qualities regardless of the rental price.**





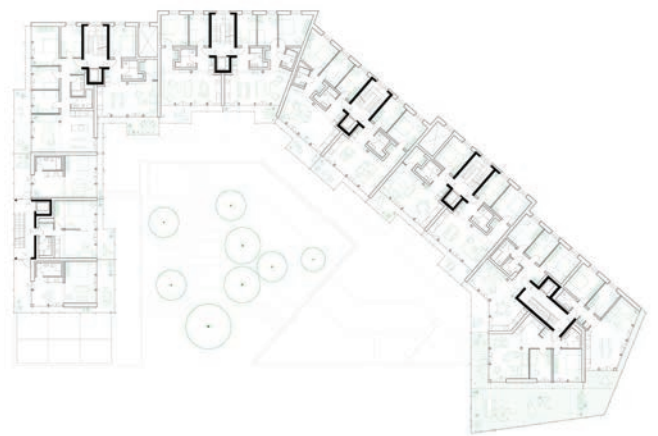
Collective



133



Ground floor level



Typical floor plan



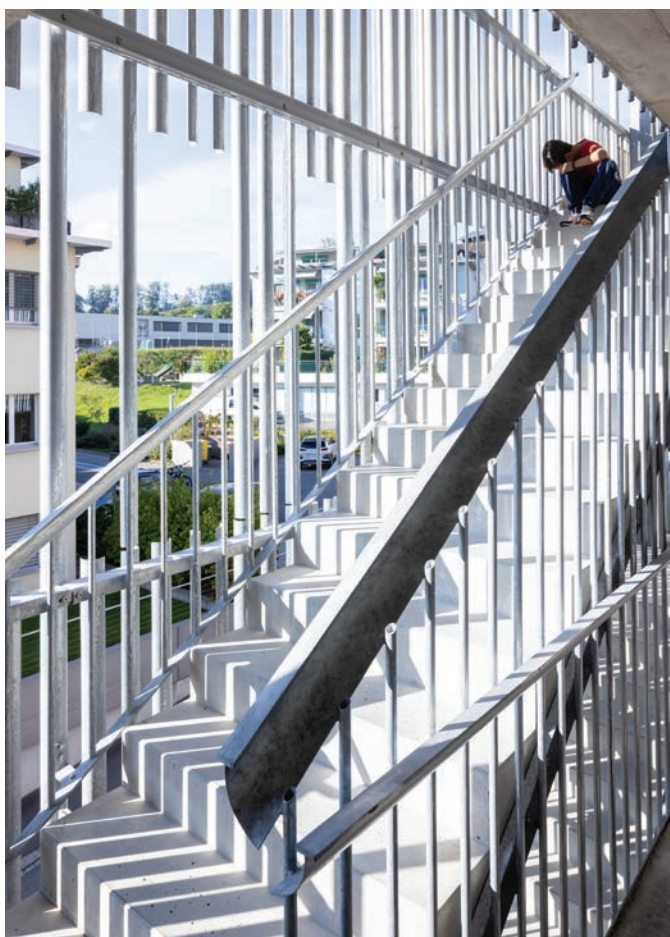


135









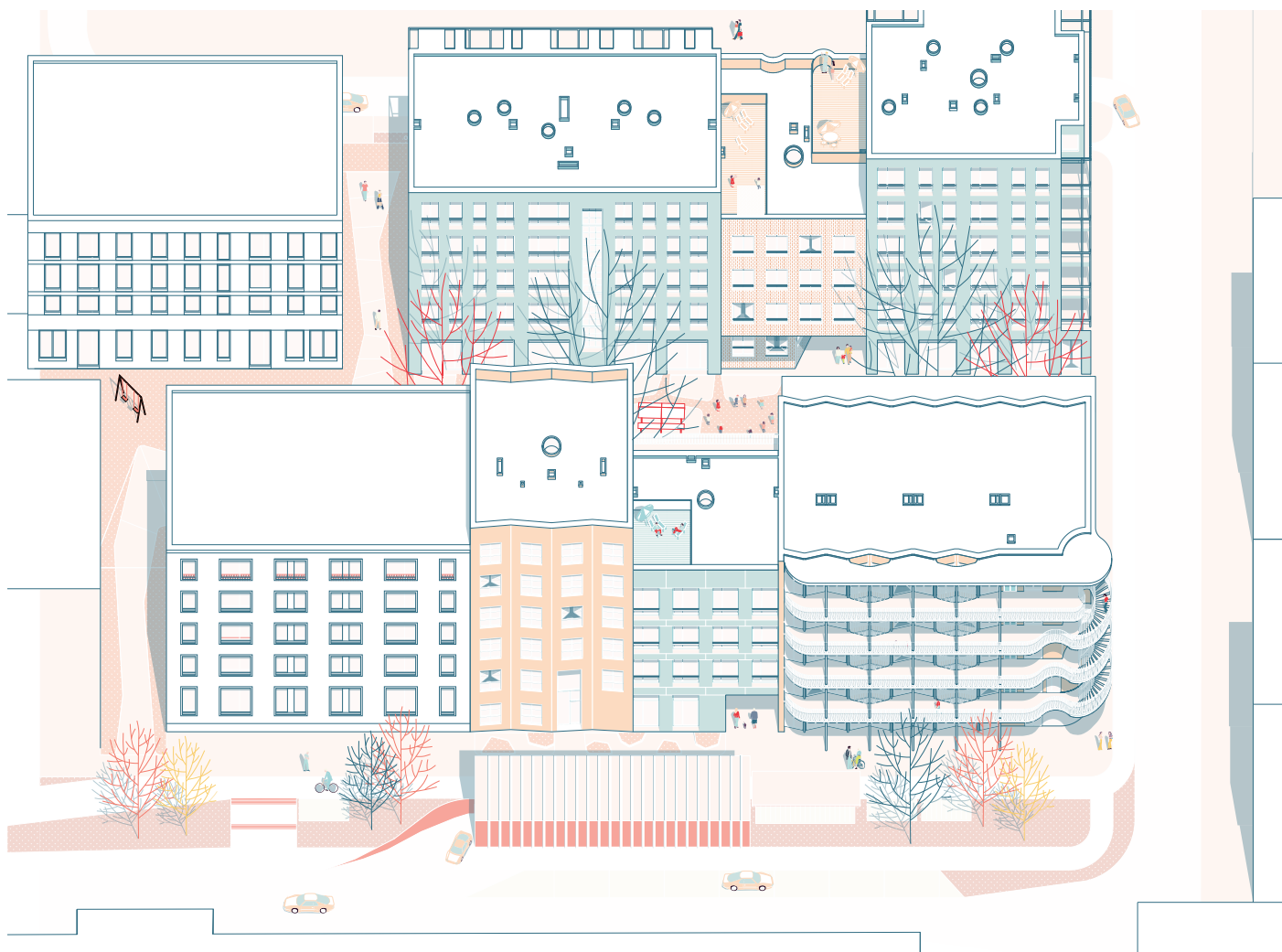
## **ORÉE IN CRISSIER**

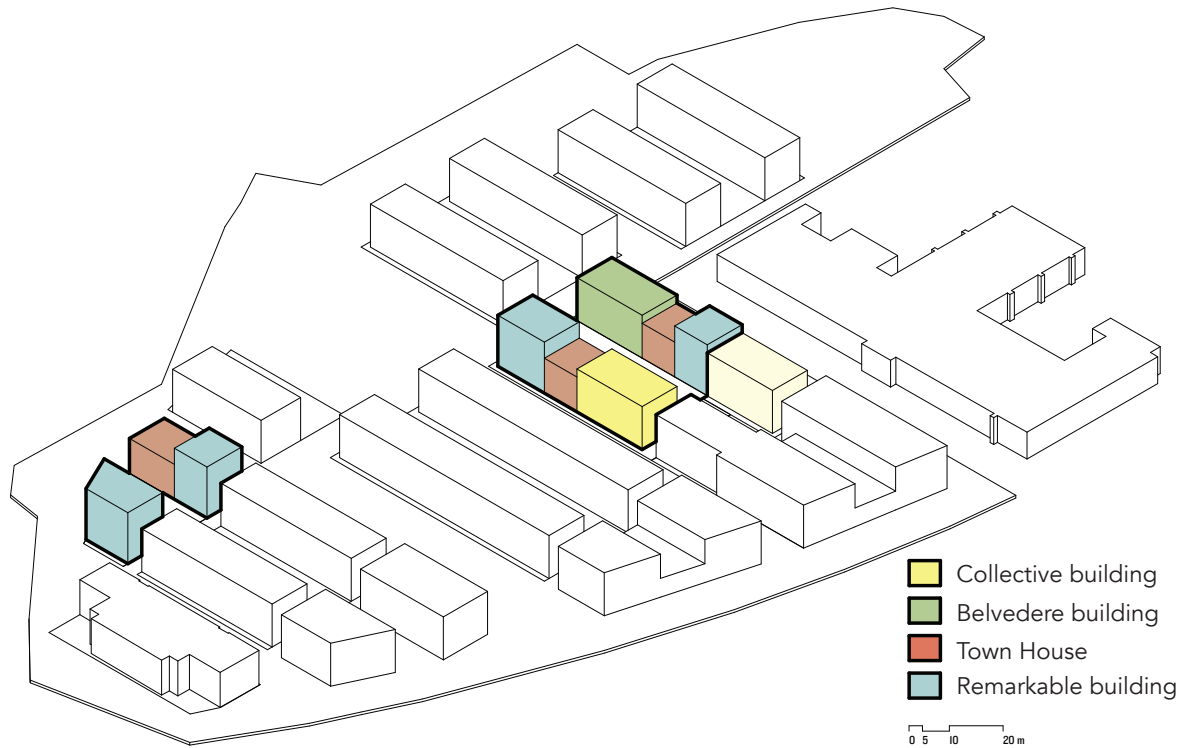
**A new couple : townhouse/remarkable house <sup>CH</sup>**

**The future district Orée in Crissier, near Lausanne, enjoys an exceptional location, close to nature, service roads and public transport. While the new development fits in a regular urban plan, it brings great architectural diversity and allows spatio-temporal flexibility in the programming of constructions and the planning process.**

**Imagined by several hands ( BW Architekten, HHF Architekten, Tatiana Bilbao Estudio), the project was carried out empirically, leaving the teams a great deal of autonomy in the design of each building. The master plan stipulated that two buildings by the same architect's office should never stand next to each other. Through the organization of the project in phases and regular joint workshops, the general cohesion of the district is guaranteed. The transitions between adjoining buildings, the public space and the neighbourhood are defined collectively. The alternation of urban forms, in particular the townhouse/remarkable house couple, gives each building an independent expression. The choice to design the remarkable houses on six levels, whose footprint is 50 percent greater than the standard unit, responds in a pragmatic way to the floor area objectives of the project.**

Program Housing  
Client Plazza Immobilien  
Location Crissier, Suisse  
Year 2017- ongoing  
Team HHF Architekten, Tatiana Bilbao Estudio

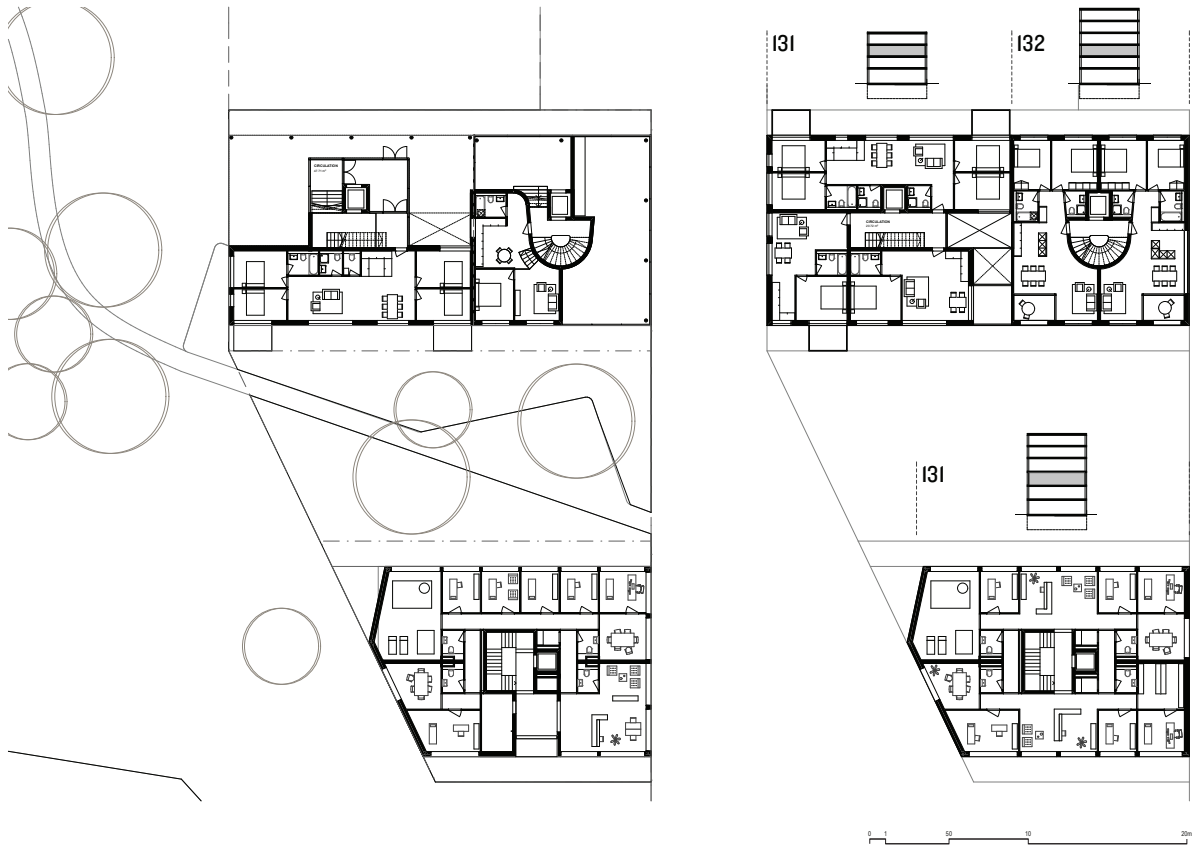




140



Collective



Standard floor plan



# LICHTSTRASSE

## Housing and restaurant in Basel <sup>CH</sup>

One of the qualities of the residential and industrial area of St. Johann in Basel is the close coexistence of old and new buildings. This coexistence is kept and emphasized in this project, only one of the four existing houses of the corner parcel, Lichtstrasse 9, has been built anew; while others, Lichtstrasse 11 and Kraftstrasse 1, have been renovated and benefit from the newly built infrastructure. A new staircase and an elevator have been introduced in the courtyard to create a direct access to the old houses and the old staircases were demolished in order to gain floor area. The new measures raise the desirability of the old houses and the ability to keep and lease the existing houses in the future. In the interior the new building is connected to one of the existing ones to allow spacious apartments orientated to all four sides.

Program Housing and restaurant Client private  
Site Basel, Switzerland  
Area 3'059 m<sup>2</sup>  
Cost 6,4 M CHF  
Year 2015  
Awards Swiss Architecture Award 2015, Best New Building 2013, Heimatschutz Basel,  
Auszeichnung guter Bauten 2013, Basel-Stadt/Basel-Land



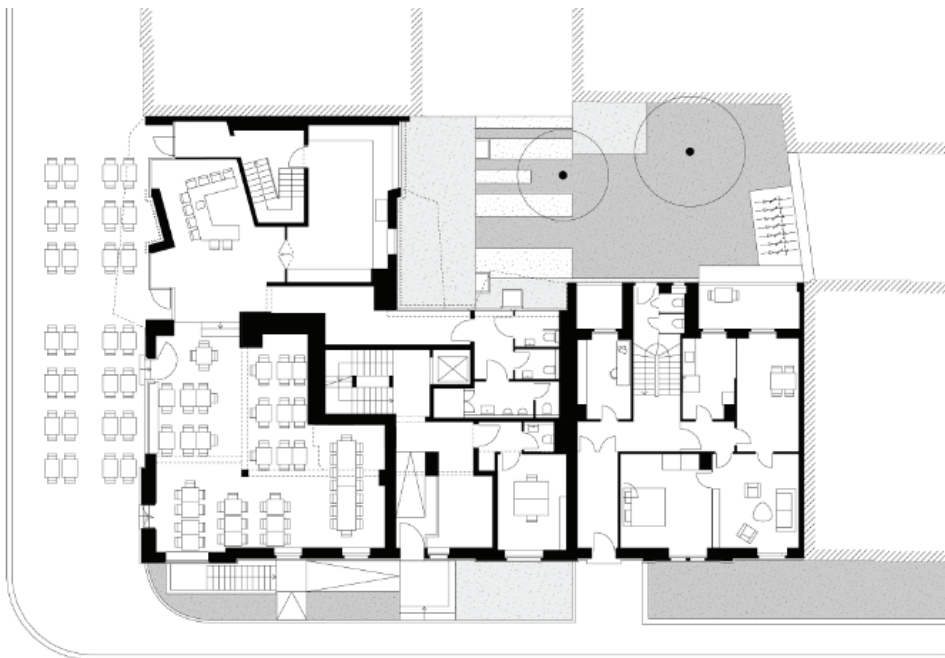






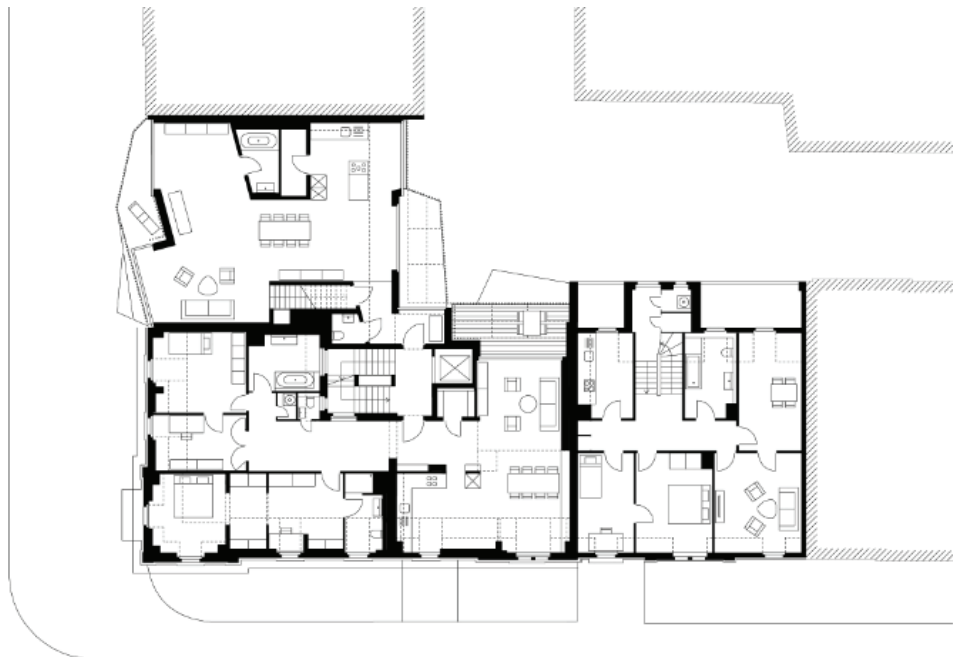


146



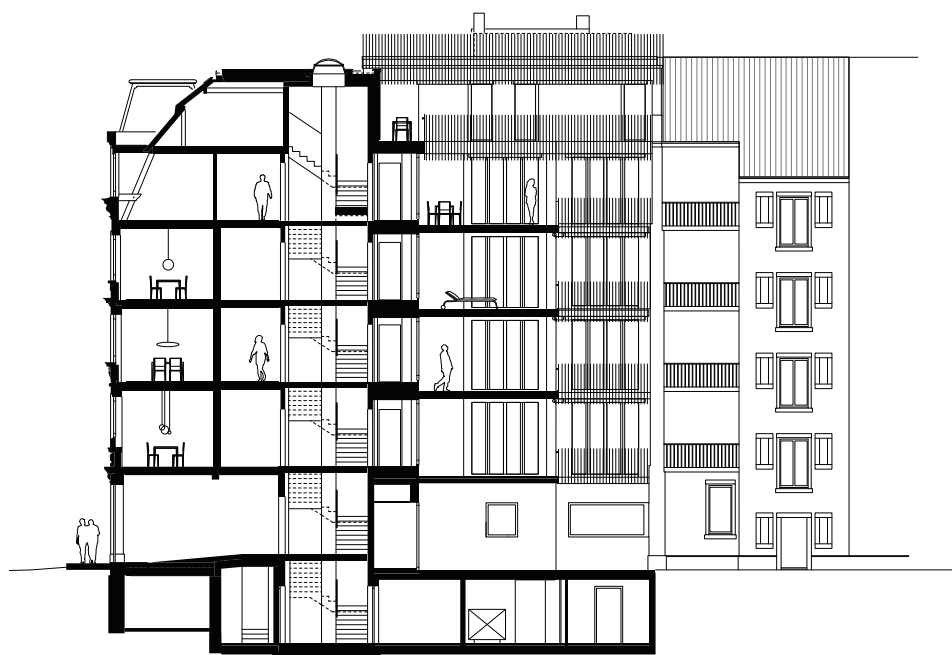
Ground floor

Collective



Floor plan





Coupe longitudinale

# BYFANGWEG

## Apartment building in Basel <sup>CH</sup>

Byfangweg is part of a residential district west of Basel's old town. Its narrow streets are characterized primarily by low-rise residential buildings from the 19th century. Originally built as a single-family house, this new building shall offer four new families the sense of their own home. This approach led to the basic idea of establishing a gap between the new building and its neighbours, thereby "exposing" all four facades. The street and garden facades are designed of red brick, whereas white stucco distinguishes the firewall and the side yard, whose space serves as a balcony layer. What emerges is a virtually free-standing building - one that has a clear orientation and fits seamlessly into the street front. Inside, the desire to have four dwellings of equal value under one roof leads to a complex spatial configuration. Every apartment has at least two levels, with the living area below and bedrooms above. Each part can be used as an independent residential unit, facilitating a multitude of conceivable living scenarios for lifelong use. The shifting front facade and the arrangement of windows in the firewall communicate this interior spatial concept to the outside. The result is an apartment building for

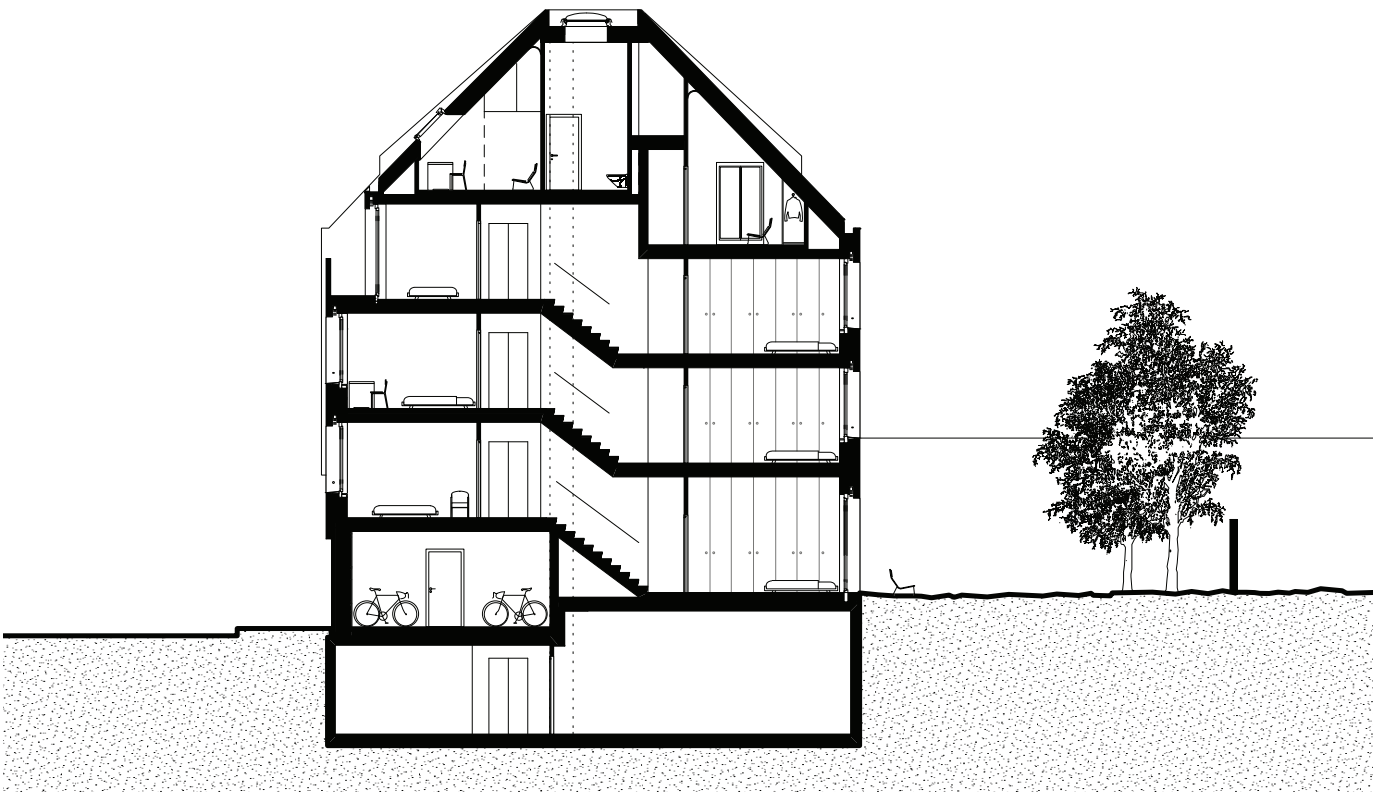
Program Apartment building  
Client Private  
Location Basel, Switzerland  
Area 700 m<sup>2</sup>  
Cost 3.98 M CHF  
Year 2016

**4 families that is made of 4 individual houses assembled into a three-dimensional architectural puzzle.**





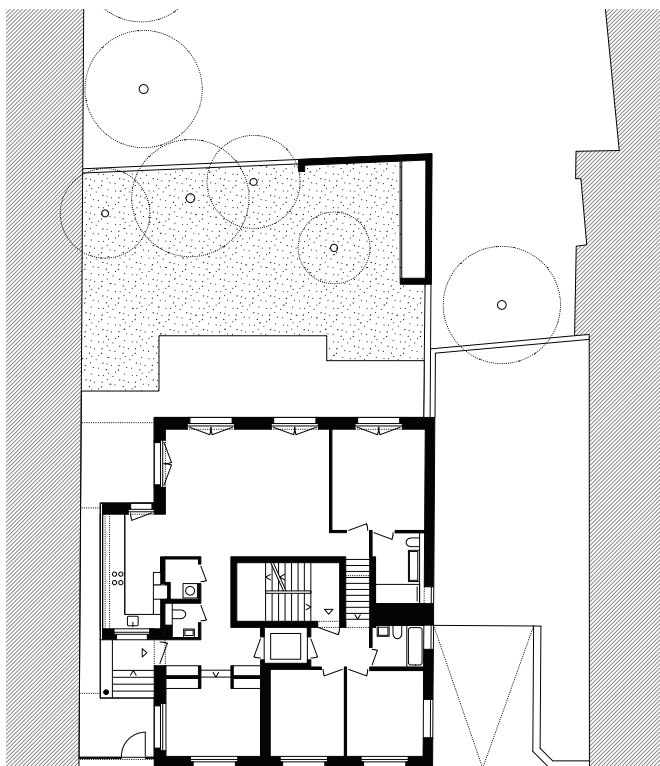
152



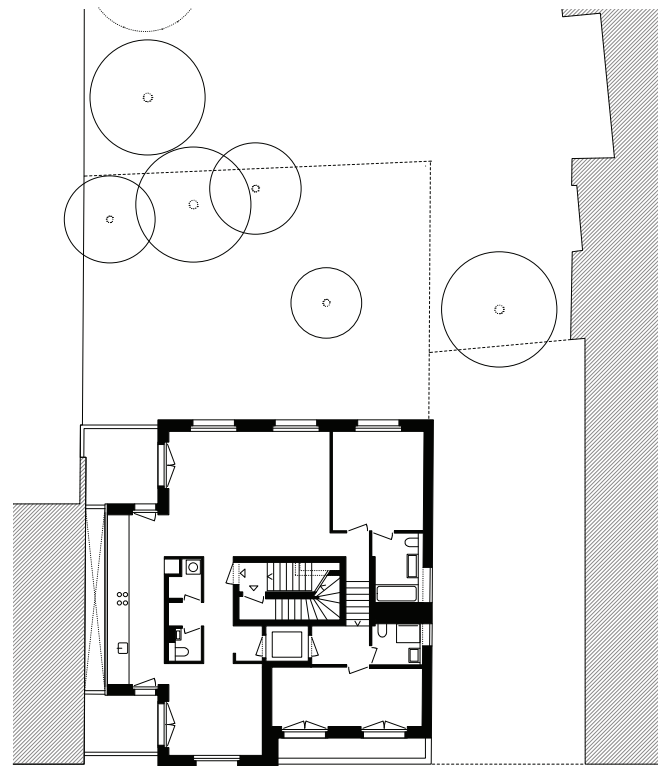
Longitudinal section

Collective





Ground floor



Level 2

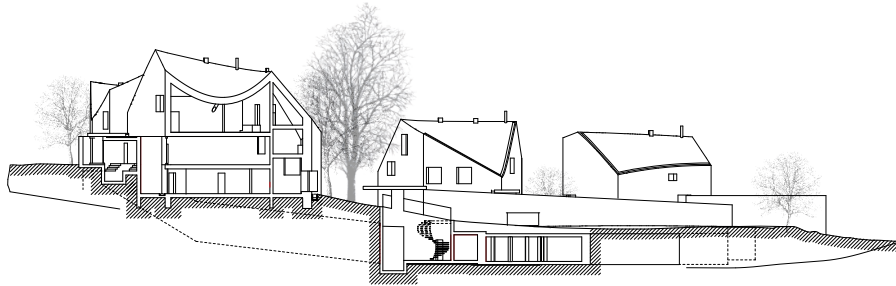
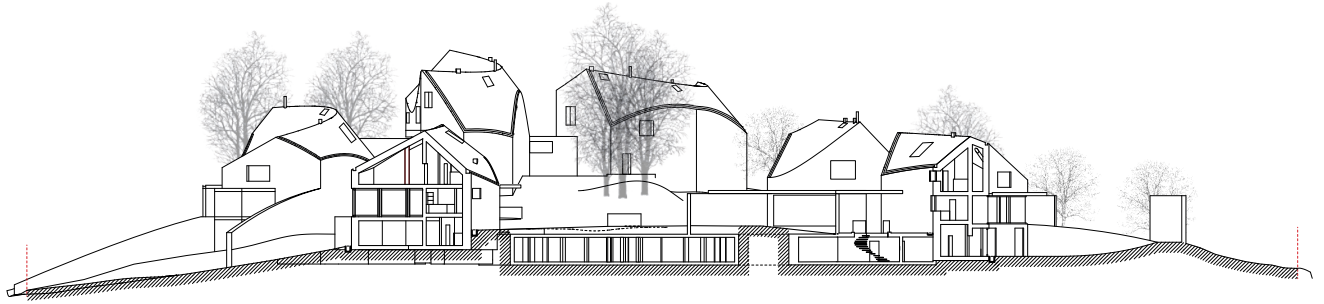
## **CDMDW**

### **Paired houses in Montreux <sup>CH</sup>**

**The roughly 6,000 m<sup>2</sup> site for CDMDW in Montreux is a topographic anomaly on Lake Geneva: a small, steep hill oriented east-west, obstructing direct views to the south and the lake. The resulting views toward the west are directed nearly parallel to the shore, reaching far along the lake past the Lavaux vineyards. Besides this starting point, the project is substantially determined by a rather peculiar paragraph in the municipality of Montreux's zoning ordinance, which permits twice the number of houses if these are arranged in pairs less than four meters apart. What results is three pairs of homes that seem as if they were handcuffed to one another, and which, despite their proximity, allow for as much privacy as possible as well as views in the same direction.**

Program Housing, urban planning  
Client Private  
Location Montreux, Switzerland  
Area 4'000 m<sup>2</sup>  
Cost 18 M CHF  
Year 2011  
Team HHF with Topotek, Plarel and Quartal

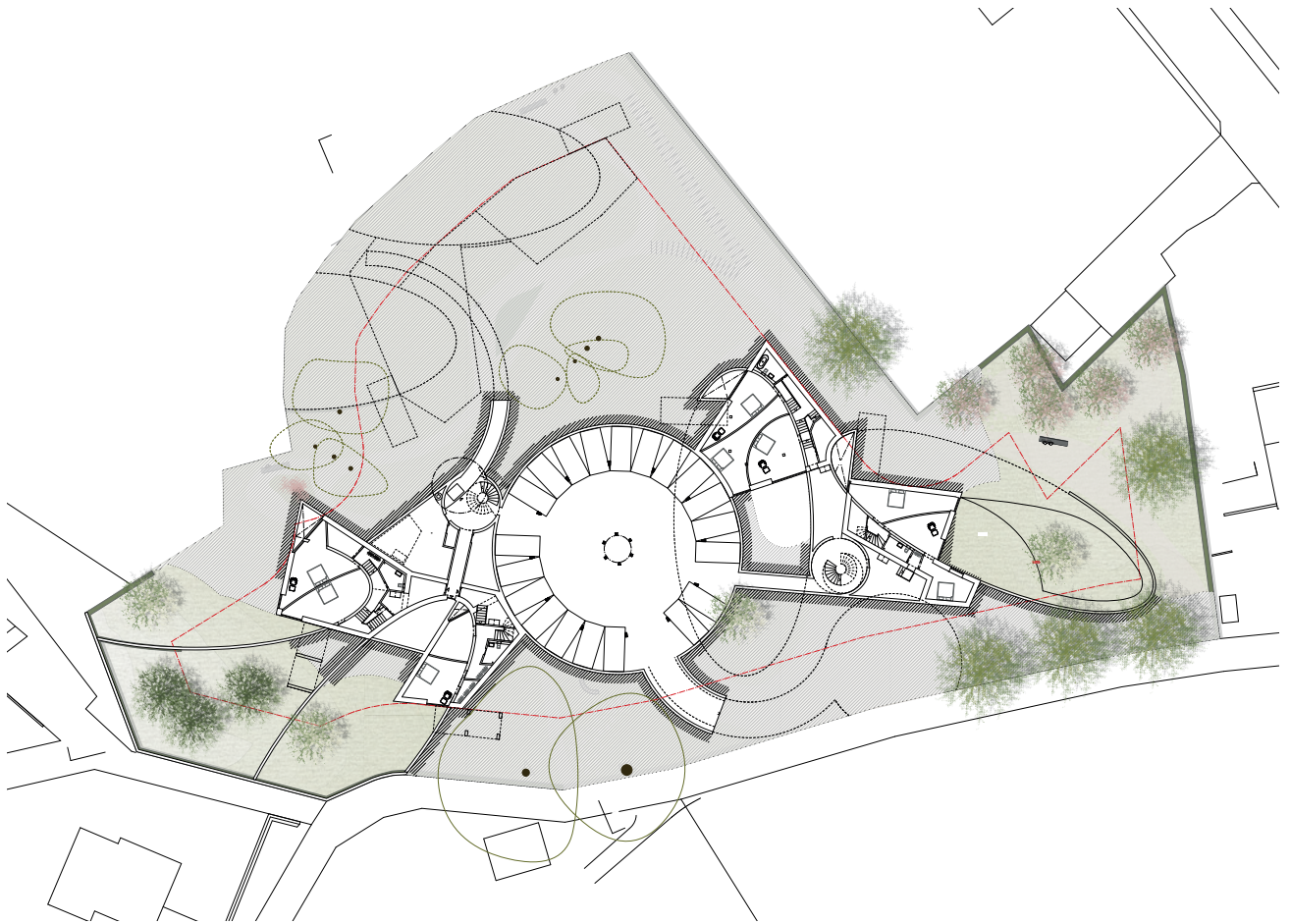




156



Collective



level 2



Ground floor

# SONVIDA

## Housing and parking in Basel <sup>CH</sup>

The project is located on the outskirts of Basel and consists of 16 villas, single family houses and small apartment buildings, all built on a 17,000 m<sup>2</sup> area. With its design and layout the project integrates itself smoothly into the surrounding garden city, which has origins in the early 20th century. The three different types of houses reflect the qualities of their different location on the site. The villas on the hillside are oriented towards their own gardens, whereas the apartment houses are treated as urban villas in a central park. The single family houses open themselves to the prospect of the open field. The development works as a green belt connecting two nearby recreation areas. The apartment houses are embedded between small hills, which at the same time serve as skylights to the common underground parking. This parking is designed as an underground street (150m long) which allows direct access to the houses above. As a result of the wave-like curvature of the concrete ceiling, there are three large skylights which make the space bright and friendly and which create a direct visual connection to the new above-ground street. These skylights serve at the same time as small hills in the apartment houses' open garden. In this way the

Program Housing development and parking  
Client Gribi Theurillat AG  
Location Bottmingen, Basel, Switzerland  
Area 12'400 m<sup>2</sup>  
Cost 25 M CHF  
Year 2009  
Team HHF + ARchos + Robert Günther

**houses are embedded between them, which creates a certain privacy in the dense setting of the new buildings.**











162



Collective





# Individual

# RÉSIDENCE TSAI

## House in Upstate New York <sup>USA</sup>

**The Tsai Residence is a country house designed for two young art collectors. The design reflects their request for an abstract piece sitting almost without scale on top of the site, located two hours upstate from New York City. The four equally-sized boxes are built as simple wood construction covered with metal panels on the outside and wood and gypsum panels on the inside. The floor plan is based on the needs of a traditional country house. The organization of the rooms is only partially a direct consequence of the rigid outer form. The living room focuses on the different light conditions needed for an art collection, while the wonderful view over the surrounding countryside is present without being dominant. The sequence of the different rooms reflects the idea of a private gallery. Natural light comes into the spaces through the openings in between the outer boxes. Key details that describe families of conditions help communicate the project's logic even if changes occur. In the Tsai Residence, the exterior corner façade details illustrate four possible ways that the corrugated metal panels meet, accounting for the full breadth of tolerance variations emerging during the construction process. The same counts for all**

Program Weekend house  
Client Private  
Location Ancram, New York, USA  
Area 400m<sup>2</sup>  
Year 2008  
Award American Architecture Award 2009  
Team HHF with Ai Weiwei

**interior wood details: they have all been developed with a consistent detailing methodology in order to achieve a standardization which makes it possible to**



167

**guarantee a certain quality over a long distance.**



168



Individual





# GUESTHOUSE

Guesthouse in Upstate New York <sup>USA</sup>

Three years after completion of the main house, the owners of the Tsai Residence approached the HHF team and Ai Weiwei to commission a guesthouse. The Tsai Residence is a country house built for two art collectors on a forested slope in upstate New York, about two hours by car from Manhattan. The guesthouse brief posited three main elements: a bedroom, a workroom and a gallery for the two collectors' art. One simple and highly effective gesture – a Y-shaped ground plan – served to link these elements at isolated points and to define the overall appearance of the guesthouse. The small bathroom, kitchenette and walk-in closet – the latter of which conceals the staircase to the basement and garage – consist of compact, free-standing boxes that simultaneously constitute the rear walls of the bedroom and workroom. In contrast to the galvanized corrugated metal façade of the main house, the guesthouse is a timber structure clad in corrugated corten steel, which rusts over time and so merges unobtrusively with the landscape – particularly in fall, when the foliage of the trees turns into a riot of red and gold. The landscape also plays a major role in the interior design of the guesthouse, for each of the three main rooms

<u>Program</u>	Guest house
<u>Client</u>	Private
<u>Location</u>	Ancram, New York, USA
<u>Area</u>	217 m <sup>2</sup>
<u>Year</u>	2011
<u>Award</u>	American Architecture Award 2009
<u>Team</u>	HHF with Ai Weiwei

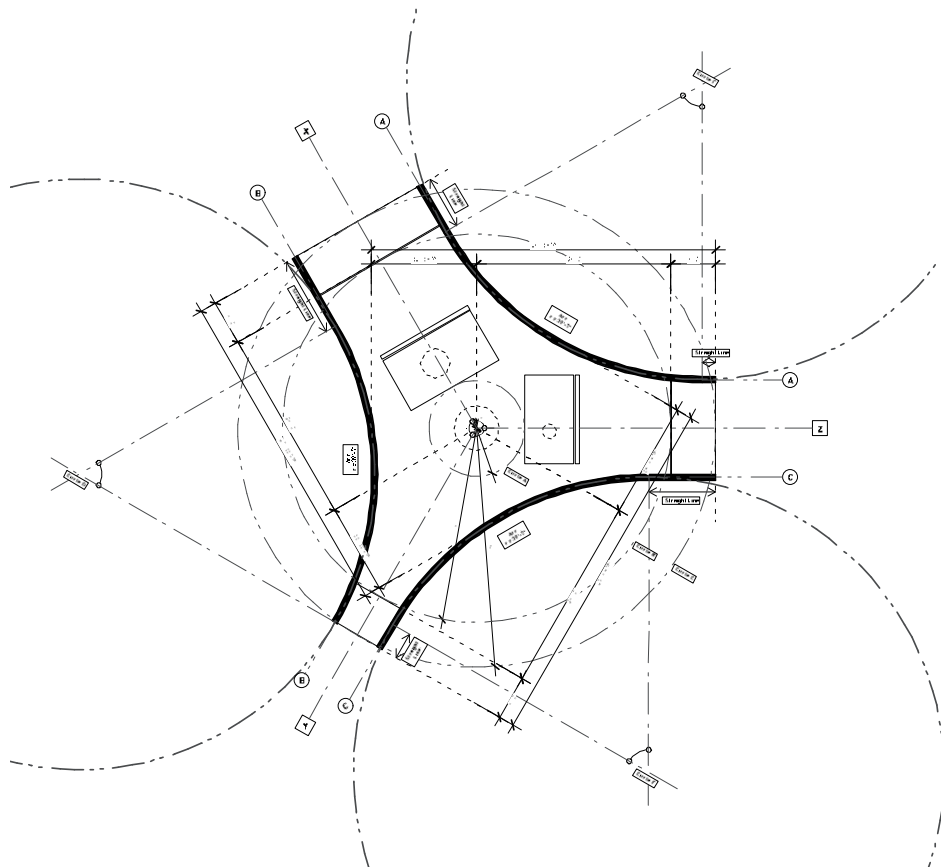
**offers a different perspective of the extensive grounds: the view is exalted at these points, and thus becomes a part of the house. The relationship**



**of the Tsai Residence to the guesthouse reflects HHF's philosophy, namely to use what already exists at a site as a source of inspiration. HHF sees every commission as an opportunity to innovate, and to deliver concrete answers to concrete problems in its signature architectural idiom.**



172



Plan and concept of the project



173







## HOUSE D

### House in Nuglar <sup>CH</sup>

**The view from House D is one of a kind. You might imagine you were in South America or upstate New York; it is hard to believe that Basel is just 25 minutes away. As the last house to be built in Nuglar, in the canton of Solothurn, House D is privileged. It is oriented parallel to the landscape, making the view a matter of prime importance. One can gaze over more than 180 degrees of unbuilt, verdant land full of mature fruit trees. HHF radically exploits this situation, thematizes it, and accentuates it even more with a few simple moves: The main level – composed of the kitchen, dining, and living areas – as well as the stair to the upper and lower floors are open spaces, entirely glazed and blending seamlessly with the outdoors. The outdoor space itself is an oversized terrace. The client did not want a garden that would have to be maintained, so we designed a terrace with wood decking and a pool. Because the terrain slopes downward slightly, the wooden deck is elevated, which protects the main living space from the curious glances of passers-by. The large terrace, which is emphasized through a simple gesture, is symbolic for the subtle radicalism with which HHF has approached the building task. The entire house is kept very simple, which is also**



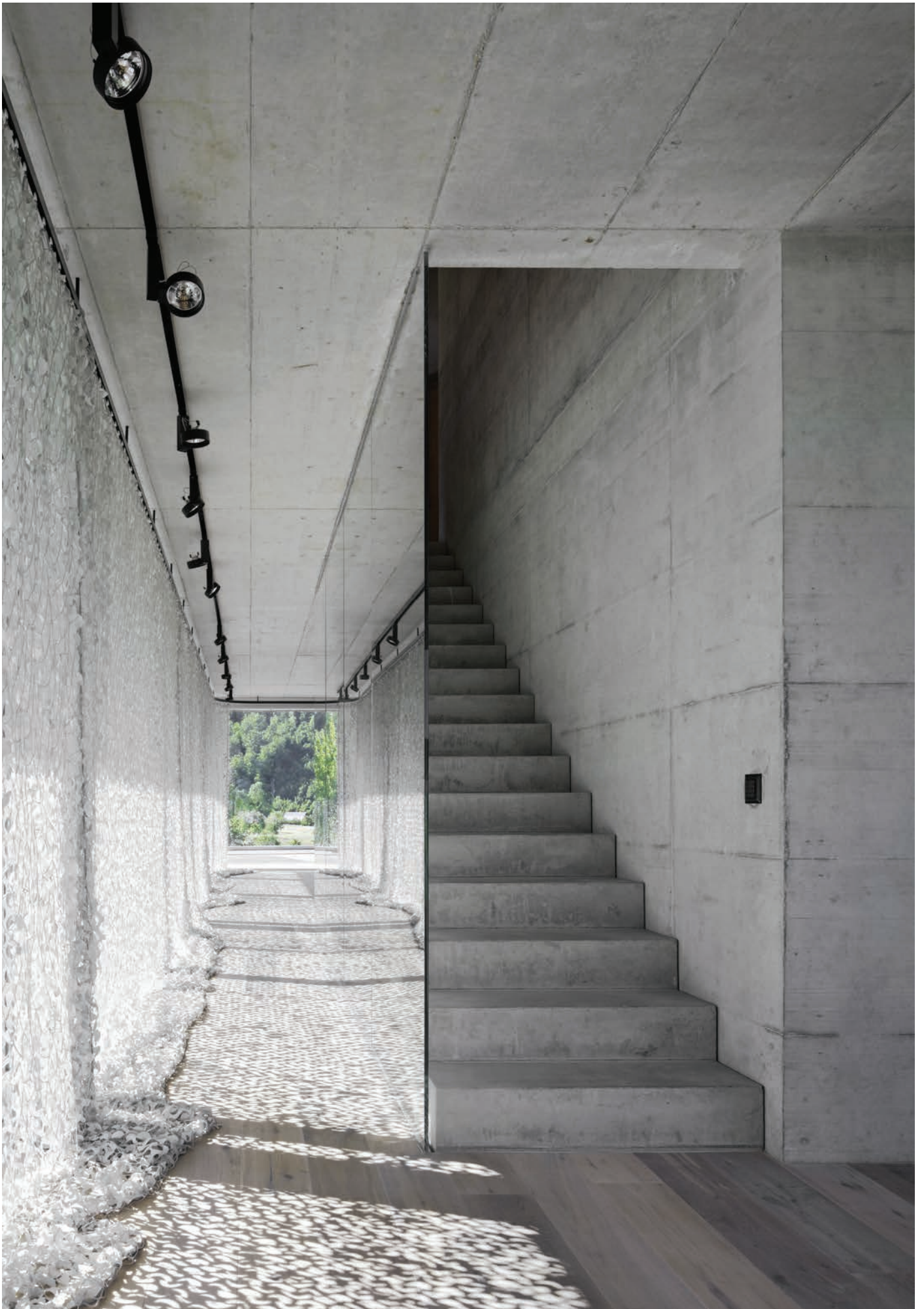
Program Private residence Client private  
Location Nuglar, Switzerland  
Area 397 m<sup>2</sup>  
Year 2011  
Awards Häuser des Jahres 2013, Winner  
Das beste Einfamilienhaus 2013  
Nomination Best Architects 2014

**manifested in the three basic materials: glass, wood and concrete. The simple and straightforward treatment of the outdoors has its counterpart in an**



177

**equally uncompromising interior. HHF is interested in working with what is available; we are not bent on developing elaborate details when industrially made products can be tailored to the project's needs. HHF develops proprietary details when the market does not have something suitable available.**











**Awards &  
Collections**

**Teaching**

**Lectures**

**Exhibitions**

# Awards & Collections

- 2021  
AIA Chicago Interior Architecture Citation of Merit Award for Swiss Consulate Chicago
- 2018  
Prix Acier from the Swiss Institute of Steel Construction for Poissy
- "Auszeichnung guter Bauten," an award from Kanton Basel-Landschaft and Kanton Basel-Stadt for Byfangweg
- Winner of French Cultural Building of the Year from ArchiDesignClub Awards, for Musée des Insectes, Poissy
- 2017  
Inclusion in the architecture collection of the Carnegie Museum of Art, Pittsburgh
- 2016  
The European Union Prize "Mies van der Rohe Award", nomination, Poissy Galore
- 2015  
Swiss Architecture Award, 1st Prize, in the category Housing
- 2014  
Inclusion in the collection of Architekturmuseum der TU München, Pinakothek der Moderne, Munich
- Nomination for «Das beste Einfamilienhaus» '14, Das ideale Heim, for House D
- 2013  
Award for the best new building from the Basel Heritage Protection, Lichtstrasse 9
- Auszeichnung guter Bauten, Award from Canton Basel-Landschaft and Kanton Basel-Stadt, Lichtstrasse 9
- Architekturpreis Berlin, Labels 2
- American Architecture Award 2013, Guesthouse
- Häuser des Jahres 2013, 1st Prize, Deutsches Architekturmuseum, House D
- Best Architects 14, award, House D
- 2012  
WAN 21 for 21 Award, HHF  
Carparol Award, 2nd Prize, Labels 2
- AIT-Award, Ruta del Peregrino  
Wallpaper Design Award, Ruta del Peregrino
- Velux Tageslicht-Award, nomination
- 2011  
Inclusion in the collection Centre Pompidou, Paris
- Wallpaper Design Award, nomination
- 2010  
Design Vanguard Award 2010, from Architectural Record
- Chernikov Prize, nomination
- Swiss Art Awards, 1st Prize, Cabriolet
- Best Architects 11, award, Labels 2
- Wallpaper Design Award, nomination
- Contractworld Award, Artfarm
- 2009  
American Architecture Award, Tsai Residence
- AR Award for Emerging Architecture, special commendation
- Best Architects 10, gold award, Artfarm
- Europe 40 under 40, award, from the European Center for Art and Urban Studies
- 2008  
Auszeichnung Hase, «Die Besten 09», from «Hochparterre» magazine, Swiss TV and the «Museum für Gestaltung» Zurich, Cafeteria Kirschgarten
- Auszeichnung guter Bauten, Gold Award from the City of Basel, Cafeteria Kirschgarten
- Best Architects 09, award, Cafeteria Kirschgarten



# Teaching

Since 2018 – ongoing:

HHF Studio at Harvard University  
Graduate School of Design, Cambridge,  
USA

Professor at KIT Karlsruhe Institut of  
Technology

2021

YAC Academy, Bologna, Italy  
Venice Biennale, Italy  
National School of Architecture  
of Versailles, France

2020

Georgia Tech, USA  
TU, Berlin, Germany  
YAC Academy, Bologna, Italy

2019

Institute of Technology Summer School,  
Karlsruhe, Germany

2018

Bishop Visiting Professor, Yale School  
of Architecture, New Haven, USA

2016 – 2017

Guest professor at the ACU Skopje,  
Macedonia

2016

International Summer School of  
Architecture, Ohrid

2014

Visiting professor, MIT School of  
Architecture and Planning, Cambridge

2013–

Teacher's Assistant ENSA Strasbourg

2011–2013

Visiting professor, ENSA Strasbourg

2011–

Professor, Joint Master of Architecture,  
Fribourg

2011

Visiting professor, University of Innsbruck

2009–2011

Professor, EIA Fribourg, Suisse

2007

Professor, graduate design workshop,  
MIT Boston

2006

Professor, Design Workshop, UIA  
Mexico City

2005–2007

Teacher's Assistant, Iapa (laboratory for  
architectural production), Prof. Harry  
Gugger, EPF Lausanne

2002–2007

Teacher's Assistant, ETH Studio Basel,  
Prof. Jaques Herzog & Pierre de  
Meuron, Roger Diener, Marcel Meili

# Lectures

- 2022  
Mextropolis, Mexico City  
AIT–Architektursalon Mannheim,  
Germany
- 2021  
Virginia Tech, USA  
YAC Academy, Bologna, Italy
- 2020  
TECE Connects, Germany  
TU Berlin, Germany  
KIT, Karlsruhe, Germany
- 2019  
YAC Academy Bologna, Italy  
Harvard Graduate School of Design,  
Cambridge, USA  
Cité de l'Architecture et du Patrimoine,  
Paris, France
- 2018  
GSAPP Columbia, New York  
Harvard Graduate School of Design,  
Cambridge  
Yale School of Architecture, New Haven,  
Academy of Art University, School of  
Architecture, San Francisco, USA
- 2017  
Cranbrook Academy of Art, Detroit, USA  
Yale School of Architecture, New Haven  
ETH Zürich, Switzerland  
University of Zagreb, Croatia  
Gartenstadt 21, Berlin  
Chart Architecture 2017, Copenhagen  
Northumbria University, Newcastle upon  
Tyne, UK
- 2016  
TU Berlin, Germany  
Museo de Antioquia Medellin, Colombia  
VII Foro Argos 360° Bogotá, Colombia  
ENSA Strasbourg, France  
Bochum University of Applied Sciences,  
KAFe 2016 in Kaunas, Lithuania  
University of Limerick, Ireland  
University American College, Skopje  
Eindhoven University of Technology  
Bochum University of Applied Sciences
- 2015  
Royal Academy of Arts London  
Journées Européennes du Patrimoine  
Forum KotorAPSS 2015  
Kunstakademie Düsseldorf  
Pavillon Suisse Expo universelle Milano  
Jung Architecture Talks, Hamburg  
whyarchitecture.org
- 2014  
MIT School of Architecture and  
Planning Cambridge  
Eindhoven University of Technology  
Karlsruhe Institute of Technology  
Peter Behrens School of Architecture  
Dusseldorf  
Architecture Week Prague  
Bauhaus-Universität Weimar
- 2013  
Brno University of Technology  
Karlsruher Institut für Technologie  
Princeton School of Architecture  
Bund Deutscher Architekten BDA  
msa | münster school of architecture  
KAP Forum for Architecture Technology  
and Design Cologne  
ENSA Strasbourg  
University of Nottingham
- 2012  
University of Oxford, University of  
Cambridge, GDNYU symposium  
London, New York University (NYU)
- 2011  
AA School of Architecture  
Glasgow School of Art  
University of Kassel  
Architekturforum Zürich  
Berlage Institut Rotterdam, FH  
Dortmund
- 2010  
ETH Zurich  
AIT München  
University of Cambridge  
Fachhochschule Nordwestschweiz
- 2009  
ETH Zurich  
HTA Fribourg  
Hochschule Rapperswil  
Ecole Nationale Supérieure  
d'Architecture de Strasbourg
- 2007  
Massachusetts Institute of Technology  
(MIT), USA  
Institut Supérieur d'Architecture  
Saint-Luc de Wallonie
- 2006  
Berner Fachhochschule,  
UIA Mexico City
- 2002–2007  
ETH Lausanne  
ETH Basel  
ETH Zürich

# Exhibitions

- 2021  
The 17th International Architecture Exhibition – La Biennale di Venezia 2021. Theme: "How Will We Play Together?" Project: The Playful Eight
- 2019  
35 Jahre S AM, S AM Swiss Architecture Museum, Basel
- Aedes Architecture Forum, Berlin, Germany
- 3daysofdesign, Embassy of Switzerland, Copenhagen, Denmark
- 2018  
44 Low-resolution Houses, Princeton University, School of Architecture
- 16th Architecture Biennale, Biennale di Venezia, "The architecture of a common ground", contribution to the Luxembourg Pavilion, Venice, Italy
- 2017  
Chicago Architecture Biennial, USA  
Swiss Architects Abroad, S AM Swiss Architecture Museum, Basel
- 2016  
Des Journées de l'Architecture, Alsace, Baden-Württemberg, Basel
- Topotek 1: Exhibition/Office, Topotek 1, Berlin
- Topotek 1: Exhibition/Munich, Architekturgalerie München, Munich
- Schweizweit, S AM Swiss Architecture Museum, Basel
- 2015  
Werkschau architektur0.15, Bauarena, Volketswil, Switzerland
- The Swiss Architecture Award, Zurich, Switzerland
- Architettura in Svizzera. Dialogo tra storia e contemporaneità, Chiostro di Palazzo Platamone, Catania, Italy
- Sacri Monti e altre storie Architettura come racconto, Milano Triennale, Castello di Masnago, Varese, Italy
- Constructing Film. Swiss Architecture in the Moving Image, S AM Swiss Architecture Museum, Basel, Switzerland
- Une histoire, art, architecture et design, des années 80 à aujourd'hui, Centre Pompidou, Paris, France
- 2014  
Architecture Week Prague, Czech Republic
- HHF—Unfinished, Architekturgalerie Munich, Germany
- 14th Architecture Biennale, Biennale di Venezia, Co-Curation, Treasures in Disguise - The Montenegro Pavilion, Venice, Italy
- 14th Architecture Biennale, Biennale di Venezia, «Greek Tourism is not in Crisis», contribution to the Greek Pavilion, Venice, Italy
- CANactions 2014, Kiev, Ukraine
- Show and Tell – Architekturgeschichte(n) aus der Sammlung, Pinakothek der Moderne, Architekturmuseum, Munich, Germany
- 2013  
Cut 'n' Paste: From Architectural Assemblage to Collage City, MOMA, New York, USA
- Lookout, Architecture with a View, S AM Swiss Architecture Museum, Basel, Switzerland
- Architekturpreis Berlin 2013, Kutscherhaus, Berlin
- Bienal Internacional de Arquitectura de Buenos Aires, Argentina
- La Défense 2020, exhibition, Coeur Défense, Parvis de La Défense, Paris, France
- Monographic exhibition and presentation Unterfeld, Baar, Switzerland
- Expo permemente, Pavillon de l'Arsenal, Paris, France
- Paris la nuit, Pavillon de l'Arsenal, Paris, France
- Building Images, Photography Focusing on Swiss Architecture, S AM Swiss Architecture Museum, Basel, Switzerland
- Monographic Exhibition, presentation Unterfeld, Baar, Switzerland
- White Cube, Green Maze: New Art Landscapes, Yale School of Architecture, New Haven, USA
- 2012  
GLOBAL Design NYU London, The Building Centre, London, Angleterre
- White Cube, Green Maze: New Art Landscapes, Carnegie Museum of Art, Pittsburgh, USA
- 13th Architecture Biennale, Biennale di Venezia, Common Ground, Venice, Italy
- Five Houses Exhibition, AIA Center for Architecture, Houston
- The 23 best buildings in/from Germany, DAM, Frankfurt, Germany
- 2011  
Centre Pompidou, part of the exhibition «Tatiana Bilbao», Paris, France
- Art+Architecture, Kunsthau Bregenz, Austria
- Arquitectura Contemporanea Suiza, Cadiz, Spain
- LE PAV S'EXPOSE, Geneva, Switzerland
- 2010  
Swiss Art Awards, Federal Office for Culture, Basel
- 2009  
ARCH/SCAPES, Shenzhen & Hong Kong Biennale of Architecture
- ARCH/SCAPES, Today Art Museum, Beijing, China
- New American Architecture, Chicago
- Europe 40 Under 40, Athens and Florence
- 2008  
CAUE 92 (Conseil d'architecture, d'urbanisme et de l'environnement des Hauts-de-Seine), Sceaux-France, Composites, New Roof Kiss
- ARCH / SCAPES, Swiss Architecture Museum, Basel-Switzerland, exhibition design

# Credits

## Editorial Management

HHF (Herlach Hartmann Frommenwiler) + A H A

## Managing editors:

Simon Frommenwiler, Anders Modig, HHF

Annabelle Hagmann, Ourania Vivien, A H A

## Artistic Direction

HHF (Herlach Hartmann Frommenwiler) + A H A

## Pictures and images

Swiss Consulat Chicago : Interior: James Florio Exterior: Ben Aaron

Labels 2 : Iwan Baan

Kirschgarten Mensa : Tom Bisig

Confiserie Bachmann : Tom Bisig

Poissy Galore : Iwan Baan, Julien Lanoo

Baby Dragon: Iwan Baan

Ruta del Peregrino : Iwan Baan

ZeitRäume : Julien Lanoo

Puzzle House : Wolfgang Hockenjos Simon Frommenwiler, Kaspar Wuergler, Jakob Lange

KIT : HHF

Artfarm : Iwan Baan

Starlette : HHF

Entrepots Renens: Iwan Baan, Anders Modig

Weggis : Iwan Baan, Maris Mezulis

Landskronhof Benjamin Krüger

Lichtstrasse : Julien Lanoo

Byfangweg : Tom Bisig

Sonvida : Tom Bisig

Tsai : Iwan Baan, Nikolas Koenig, Markus Tretter

Guesthouse : Iwan Baan

House D : Tom Bisig

## Production

AHA

43 rue de Lancry

75010 Paris

aha-paris.com

## Papers

Arcoprint

Brossulin XT Bianco

Typefaces

Avenir

Suisse Works

Printed in France by Simon Graphic

©HHF2022







**HHF Architekten ETH SIA BSA**

**Allschwilerstrasse 71 A**

**CH-4055 Bâle, Suisse**

**T +41 61 756 70 10**

**info@hhf.ch**

**hhf.ch**